

# Instruction Sheet

## SMARTPOWER™ Mini Dispenser Installation

### Prerequisite:

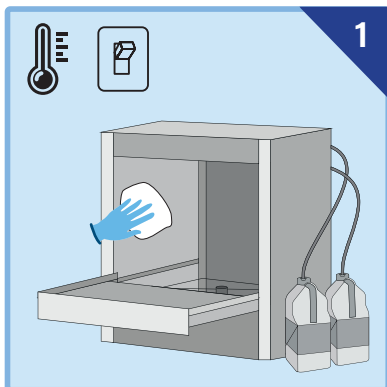
Remove feed of any liquid dosage system.  
Disconnect internal pumps.  
Make sure that the customer does not need the machine **for 90 mins.**  
It is crucial to follow all steps from the installation manual.

### Installation Equipment



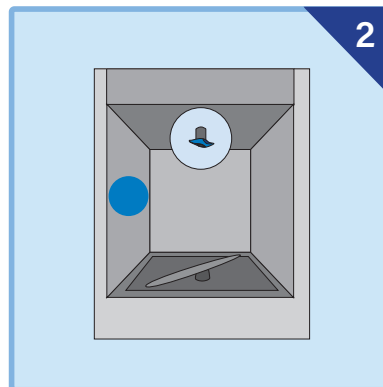
### SMARTPOWER™ Mini 2-IN-1 UNDERCOUNTER BLOCK

For **Technical Support** or to **Learn More**



#### Machine preparation:

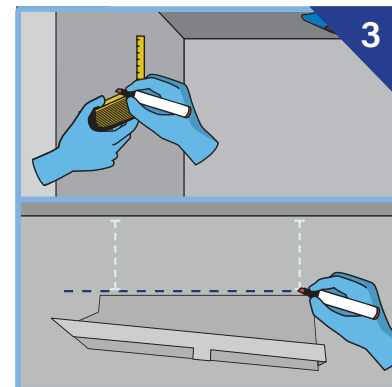
- ✓ Machine is switched off
- ✓ Machine and backplate have the same temperature (ca. 20°C)
- ✓ Machine is clean and descaled
- ✓ Machine surface is free from biofilm and grease
- ✓ Machine surface is dry



Best practice: backplate and dispenser sit about 10cm below upper wash arm

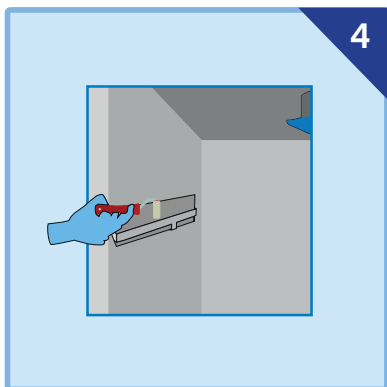
#### Basic requirements:

- Choose an even surface inside the machine to allow good adhesive of the tape
- Allow easy removal and insertion of backplate

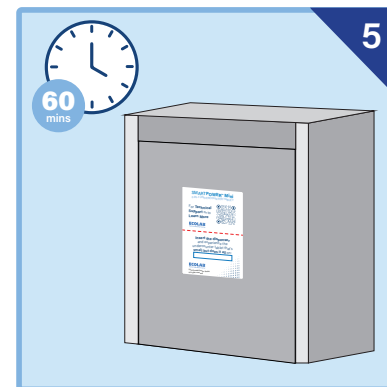


#### Correct alignment of backplate:

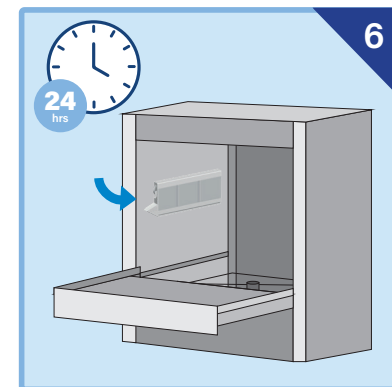
- Measure down from the top at two positions to align horizontally.
- Mark the right position on the wall
- Only horizontal alignment of the upper edge
- ensures proper water flow and right dilution



- Peel off the protective foil from the backplate.
- Cautiously position the top of the backplate in horizontal position, then attach the rest.
- Apply a lot of pressure to the entire backplate with the installation roll for min. 60 sec.



- Add sticker to the machine door and include date and time 24h from now
- Do not turn on the machine **for 60 mins!**



- Do not insert the dispenser to the backplate **for min. 24 hours!**
- Be cautious with the backplate when loading the rack in the machine in the first 24 hours.
- Operation in the first 24 hours: Add 1/4 block of SMARTPOWER Mini detergent & rinse to the sump of the machine. Reload every 5-10 cycles as needed.

