



PROSAT[®] Sterile
STERILE PRESATURATED WIPES
For professional use only. Not for retail sale.

PS-911EB-BPR

9 x 11" (23 x 28 cm) meltblown polypropylene wipes
presaturated with 70% IPA/30% DI Water
30 wipes/pouch

WARNING: FLAMMABLE



Contec, Inc. Spartanburg, SC 29303 USA
Ph: +1-804-503-6033 www.contecinc.com



2004-047

Wipes for Critical Environments

Mission-critical cleaning and contamination control

Contec® is a leading manufacturer of contamination control products for critical cleaning in manufacturing environments worldwide. Contec's cleanroom wipes, mops and disinfectants are used in various industries across the globe including biotechnology, pharmaceutical, semiconductor, healthcare, microelectronics and other critical applications.

Experienced

With over 30 years experience, we understand the unique cleaning and contamination control requirements of these highly regulated markets. Our sales and technical support teams are fully trained to assist customers in finding or creating a Contec product that best meets their needs. With experienced, long-established sales representatives all over the world, our customers benefit from personalised service and fast, efficient sample and order turnaround.

Global

Contec has established a cleanroom manufacturing facility and distribution centre in Europe which allows us to locally support our European customers. Contec owns and operates further manufacturing facilities in South Carolina, USA and Suzhou, China. Contec has a team of global technical specialists and sales representatives operating across all continents. These facilities and dedicated team members give Contec the ability to provide product and technical support to multi-national customers with global needs.

Committed to quality

We recognise our customers as the centre of our organisational structure. Our employees are committed to meeting each customer's specifications and exceeding each customer's expectations. We will achieve this through the periodic review and continuous improvement of all processes in our management system.

All manufacturing sites are currently certified to ISO 9001:2015, which ensures customers of consistent quality products - from development to delivery. As a vertically integrated manufacturer, Contec controls more of the manufacturing process than any other supplier. We invite you to come and visit our manufacturing facilities and find out for yourselves.

Committed to customers

Let us help solve your cleaning challenges. Product samples, demonstrations and trials are always offered free-of-charge. We have regional technical specialists working with our professional sales staff who will come to your location and recommend the best product and practices for your needs. If necessary we can develop unique custom solutions to your problems.



Contec Cleanroom Wipes

A wide range of dry and presaturated, knitted and nonwoven wipes specifically designed for cleanroom applications

With 30 years of experience in the processing of knitted wipes, Contec has developed the most complete range of wipes and mopping products for the life science industry. Contec offers an extensive line of cleanroom wipes designed to meet the requirements of some of the most critical environments in the world. Contec offer many different wipe substrates, edge technologies, configurations, and processing options for both sterile and non-sterile, dry and presaturated, knitted, nonwoven wipes and microfibre wipes.

In 1992 Contec pioneered the use of presaturated wipes for industrial use. Over 30 years of industry-leading innovation has led to one of the widest ranges of presaturated wipes for cleanroom applications. Recent innovations in the range include wipes with guaranteed low endotoxin levels and wipes made from recycled plastic bottles.

Contents

- Guide to efficient wiping 4**
- Choosing a cleanroom wipe 6**
- Contec Knitted Polyester Wipes 8**
- Contec Recycled Polyester Wipes..... 14**
- Contec Microfibre Wipes 16**
- Contec Knitted Polyester Speciality Wipes..... 20**
- Contec Nonwoven Wipes..... 21**
- Contec Speciality Nonwoven Wipes 29**
- Contec Presaturated Wipes 30**
- Contec Knitted Polyester Presaturated Wipes..... 32**
- Contec Sterile Vial Wipes 34**
- Contec Nonwoven Presaturated Wipes 35**
- Wipes Comparison Guides 44**



Guide to efficient wiping

Cleanrooms and other controlled environments require stringent control of particles, residues and micro-organisms to ensure the desired product or process outcome. The control of these critical parameters is very often achieved by the use of wipes, either dry or presaturated. Studies have shown that wiping is the most effective method of cleanroom cleaning.¹ Presaturated wipes in particular, are highly suitable for capturing and removing particles and dirt, disturbing biofilms and removing residues.

Wipes are especially good, not only at picking up dirt and particles, but retaining them and allowing the dirt and particles to be physically removed from the cleanroom. The ability of a wipe to retain and remove a particle or fibre depends on the structure of the wipe and the size of the contaminant. Wetting the wipe significantly enhances particle entrapment and removal. In addition, Contec has developed innovative surface treatments for dry wipes in order to enhance particle removal and retention.

A single facility may need a number of different wipe substrates, sizes and formats to cover all the requirements of the different processes and room grades within the facility. Contec has developed the widest selection of knitted wipes using a variety of fabric types, edge technology and processing options. By adapting these options to meet different cleaning and wiping needs, Contec has engineered a family of pharmaceutical wipes which can be confidently used from Grade A product contact areas through to unclassified support rooms.

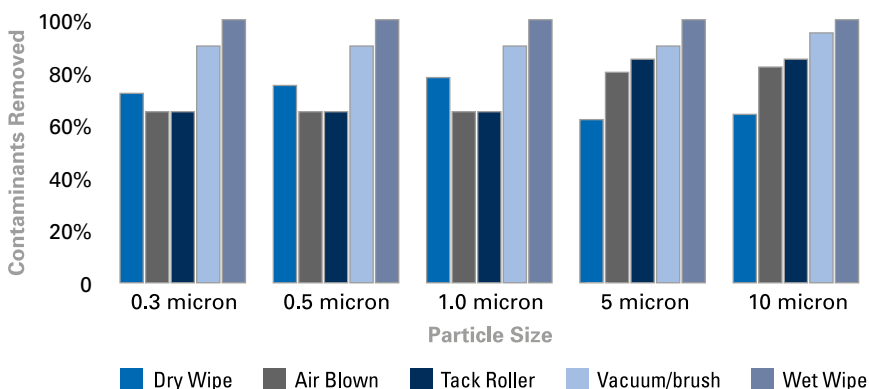
"presaturated
wipes especially,
are highly suitable
for capturing and
removing particles
and dirt..."

Dry or presaturated?

Various studies have shown that wiping with saturated wipes is a very effective way to control contamination on a hard surface.¹ Studies of particle adhesion to surfaces have shown that the predominant force binding particles to a surface is a capillary force.² The use of a wipe presaturated with a low surface tension fluid such as alcohol helps to lower the surface tension of this binding force facilitating the removal of the particle. Wetting a wipe further enhances its ability to trap particles. Using a wetted wipe provides an overpowering bias for the particles to remain with the wipe so once the wipe is removed from the environment, the particles go with it, resulting in the most effective method for removing particles from a cleanroom surface. Presaturated wipes offer many other benefits; including increased solvent control especially key in areas with expensive equipment, significantly reduced VOC emissions, increased convenience, increased consistency and repeatability whilst lowering validation time.

The benefits when used for disinfection could be even more significant according to a study which compared the spread of microbial contamination on surfaces cleaned with dry wipes sprayed with alcohol to those cleaned with presaturated wipes.³

Cleaning Effectiveness Method Comparison¹



How to wipe

For the wiping process to be successful the wipe must come into intimate contact with the unwanted contaminants and the process must be consistent and repeatable. There are many areas in a cleanroom where consideration needs to be given to whether the particles are being shielded, Fig 1. Difficult to clean areas should always be cleaned first with particular attention to areas where particles may be difficult to reach.

Technique is also important to prevent the captured contamination being re-deposited on a surface. Some general best practice rules include:-

- Fold the wipe to ensure that even pressure can be applied across the wipe. It also means that a clean side of the wipe can be presented to the surface on every stroke ensuring no contaminants are re-deposited on the surface. Fold the wipe in half and then in half again, this produces up to 8 clean sides to be used. Fig 2.
- Pick up the quarter-folded wipe at the open edges. Grasp the unfolded edges between the thumb and forefinger. When wiping, place equal pressure across the edge of the hand, holding the fingers together and pull across the surface to be cleaned ensuring that the open edges are lifted away from the surface. Angling the hand slightly allows the folded edge of the wipe to remain in consistent contact with the surface.
- Use pull and lift technique technique, shown in Figure 3. Lifting the wipe at the end of every stroke ensures that any contamination is removed from the surface.
- At the end of every stroke, either flip or refold the wipe, exposing a clean surface. A general rule is that the wipe surface needs to be changed every 10 wipe lengths.
- It is important to ensure that no area is missed. To facilitate this, wiping in straight lines with overlapping strokes will mean that every centimetre is covered. To prevent a miniscule gap between the strokes, each stroke should overlap the previous by 10 – 25%. Wiping should never be carried out in a circular motion as this causes the wipe in its dirtiest state to be passed over an area which has just been cleaned.
- Wiping should be carried out from the cleanest area to the dirtiest, most critical to least critical. This will usually be from top to bottom, from back to front, from driest to wettest.

"...our results clearly demonstrated, in a quantitative manner, that alcohol pre-impregnated wipes are more effective at reducing surface bioburden than dry wipes sprayed with alcohol.³"

Fig 1

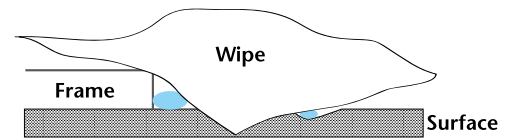


Fig 2

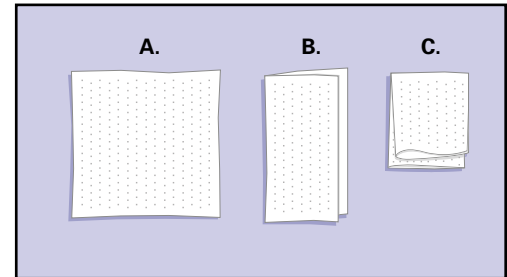


Fig 3

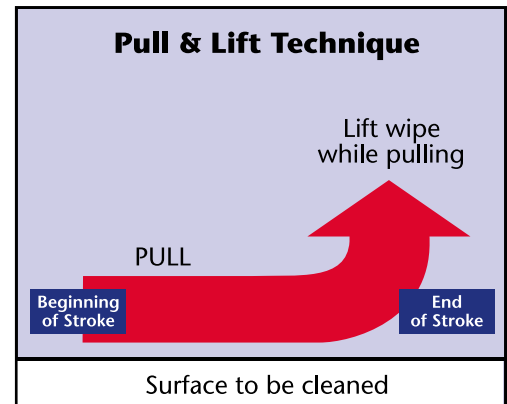
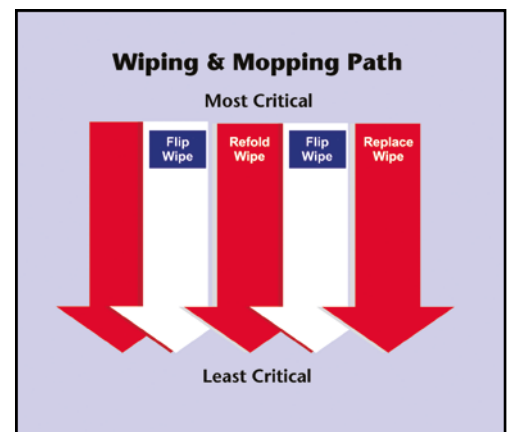


Fig 4



(1) Cleaning Effectiveness Method Comparison: Contec Presentation 1996: D Nobile

(2) Wiping Surfaces Clean: Vicon Publishing 2004: H Siegerman Ph.D

(3) Evaluation of alcohol wipes used during aseptic manufacturing: The Society for Applied Microbiology, Letters in Applied Microbiology 48 648-651: M.N. Panousi, G.J. Williams, S. Girdlestone, S.J. Hiom and J.-Y. Maillard (2009)

"Contec has a range of substrates, knitted or nonwoven, different edge types, different basis weights, to suit all applications and budgets within a cleanroom..."

Choosing a cleanroom wipe

Contec offers an extensive line of cleanroom wipes in many different wipe substrates, edge technologies, configurations, and processing options for both sterile and non-sterile, dry and presaturated, knitted, nonwoven wipes and microfibre wipes.

Wipes Characteristics

The characteristics of individual wipes affect their performance. Very often a compromise needs to be made between the different attributes. The decision of which wipe to choose for a particular application should be risk based, dependant on the relative impact on a product or process.

Care should be taken when comparing results, as comparing technical data from different sources is an inexact science due to the variability between different test methods and different testing equipment. The test methods for particles and fibres often vary considerably and the results even more so.

Cleanliness: Every wipe will contain some contaminants, so it is important to minimise the deposition onto critical surfaces during wiping. Laundered, sealed edge, synthetic wipes are the cleanest available option; however, they are also less sorbent and more expensive than wipes made of natural fibres. Test results are usually declared for particles and fibres, fibres generally referring to individual "long" particles over 100µm.

Sorbent properties: The ability of the substrate to absorb liquids. Sorbent properties are critical for the removal of liquids, especially when wiping to dry. Test results are usually available for the intrinsic and extrinsic absorbency and the rate of sorption. Intrinsic absorbency is usually reflected as ml/g and extrinsic absorbency as ml/m².

Wipes containing natural fibres have better sorbent properties, however they tend to release higher levels of particulates and fibres. In general, synthetic wipes (polyester and polypropylene) tend to become more sorbent as the filament size is reduced, with microfibre products being the most sorbent option. Polyester wipes can be treated during the finishing process to improve their absorbency.

Weight: Often expressed as g/m², this variable has an effect on sorbent capacity and cost.

Chemical compatibility: Pure synthetics such as polyester nonwovens and knitted fabrics offer the greatest range of chemical compatibility, while those containing cellulose are susceptible to degradation by moderately caustic solutions and are not suitable for use with all disinfectants.

Metallic and other ions: Semiconductor and data storage industries are very concerned about ion contamination from a wipe. For the most sensitive industries wipes with individual ion levels below 1ppm are utilised.

Wipe classification

Wipes are very often grouped by substrate and their manufacturing process as these all have an effect on the characteristics above.

Material used: Synthetic, natural, or blended fibres. Generally synthetic materials have longer fibres that are cleaner than natural fibres.

How the wipe is constructed: Knitted, nonwoven (hydroentangled, meltblown, chemically bonded) or woven.

How is it converted into wipes: Knife-cut, or cut and sealed edges. Sealed edges reduce the release of particles and fibres.

Whether it has been treated or laundered: Laundering reduces all key contamination criteria; sorption enhancers and particle attraction treatments can be added during finishing.



Pharmaceutical cleanroom wipes

Microbiological contamination is a critical concern for manufacturers of pharmaceutical, and medical device products. Annex 1 of cGMP states that "Disinfectants and detergents used in Grades A and B areas should be sterile prior to use." All cleaning products including wipes used in aseptic areas, are usually sterilised or provided sterile by the supplier to prevent compromising the cleanroom. This allows the manufacturer to focus on core activities.

Sterile Wipes

Sterility is the absence of living organisms. The Sterility Assurance Level (SAL) of a product is defined as the probability of any given unit being non-sterile after exposure to a validated sterilisation process.

Contec's validated sterile wipes are sterilised by Cobalt-60 Gamma Radiation and validated to a Sterility Assurance Level (SAL) of 10^{-6} in accordance with standards and recommended practices of Association for the Advancement of Medical Instrumentation (AAMI) Guidelines. This means there is less than a one in one million probability that the product contains a viable microorganism.

Contec can offer both sterile knitted 100% polyester wipes and a range of nonwoven wipes. Each product is either double or triple packaged to ensure product integrity and uncompromised entry into the aseptic suite. Small packaging configurations in easy-to-open bags and pouches are used for sterile wipes, to help keep wipe waste to a minimum.

The label provides lot numbers and expiration dates for lot traceability. A validation package is available to support all sterile products. Each batch of sterile product comes with lot-specific Certificates of Conformance and Sterilisation.

"The use of low endotoxin products for cleaning and contamination control can help to minimise the risk of endotoxin contamination."



All Contec's validated sterile products are highlighted with the green 10^{-6} symbol.

Pyrogens and Endotoxins

A pyrogen is quite simply a fever producing substance, some of the most common types of pyrogens are bacterial endotoxins. These are derived from the outer cell membranes of gram-negative bacteria and are released upon breakdown of the cell wall or bacterial cell lysis. The terms endotoxin and pyrogen are often used interchangeably. Products containing pyrogens (endotoxins) can pose a life threatening risk to patients.

A sterile product is not necessarily pyrogen/endotoxin free. The process of sterilisation only ensures the absence of viable living bacteria. If a product is manufactured with very low levels of initial bioburden in clean conditions it is possible to create products where only very small numbers of endotoxins are created during the sterilisation process.

Endotoxins are measured in Endotoxin Units, usually expressed as EU/ml or EU/device. Contec can offer both dry and presaturated wipes with guaranteed low levels of endotoxin contamination. All of Contec's low endotoxin contamination control consumables are batch tested using the Limulus Amebocyte Lysate test for quantification of endotoxin levels.



All Contec's Low Endotoxin products are highlighted with the purple LE symbol. They are all validated sterile to 10^{-6} SAL.

- **Manufactured from multi-filament textured polyester yarn which is highly durable and tear resistant**
- **Knitted structure enhances particle entrapment and increases absorbency**
- **100% man made fibre is extremely low in fibres and particles**
- **Knitted polyester wipes are soft and pliable with good biological cleanliness**

Contec Knitted Polyester Wipes

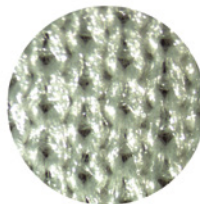
Laundered polyester knits are the cleanest category of wipes for critical environments. These wipes are made from multi-filament textured polyester yarns that offer an excellent balance of absorbency and cleanliness. Through years of continuous improvement, Contec has created processes that minimise non-volatile residues (NVR's) and particles, yet result in a sorbent wipe with good functionality.

Contec has created the widest selection of knitted wipes using a variety of fabric types, edge technologies and processing options. By changing these parameters to meet different requirements, Contec has a range of products which meet the needs of many different customers.

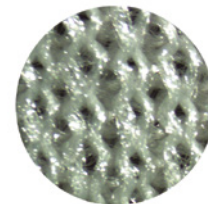
The wipes are available with soft knife-cut edges and cleaner laser-cut edges. The wipes are laundered and packed in a cleanroom and are provided double or triple packed in cleanroom compatible packaging. Each lot is labelled to provide traceability.

Types of knitted wipe

Wipes can be knitted in a variety of ways to improve the performance characteristics. All Contec's knitted wipes as a minimum have been created using an interlock knit which is a variation of a rib knit where any given stitch will reveal another knit stitch. This makes the wipe more durable and provides a slightly heavier basis weight.



Interlock



No-run interlock knit

Contec's knitted wipes are available in two different weights, standard weight approx 120g/m² and heavyweight, approx 140g/m². All Contec's heavier weight wipes, are created using a no-run interlock knit. This is similar to the interlock knit but a periodic extra stitch is added that does not allow the fabric to "run" or unravel if snagged. This makes the wipe very durable and suitable for use on a wide variety of surfaces.

Contec also has a range of microfibre wipes to choose from; 100% polyester standard fibre/microfibre blends, polyester/nylon blends and a unique microfibre/polypropylene option.

2-Ply Quilted Polyester

2-ply quilted polyester wipe in a laminated construction. The lamination of two layers of fabric allows the final product to have more than twice the absorbency of the two single ply layers. It is the most sorbent sealed edge wipe available.

100% knitted polyester with sealed edges

Knitted 100% textured polyester wipes with laser-cut sealed edges for very low levels of particles and fibres. Laser cutting seals the fibres at the edge of the wipe allowing 100% utilization of the wipe.

100% knitted polyester

Also knitted from 100% textured polyester filament, these wipes are knife-cut. A knife-cut edge provides a very soft edged wipe that is non abrasive.



- Recommended for ISO Class 3-8 environments
- 240g/m² 2-ply quilted polyester wipes for increased strength, durability and absorbency
- Laser-cut which seals fibres at wipes edge
- Extremely low levels of particles and fibres

Quiltec I Wipes

2-ply quilted polyester with sealed edges

Product information

Quiltec I Wipes are manufactured using two layers of knitted polyester fabric that are laminated together to form a stronger more sorbent wipe. Additional fluid is captured within the quilted pockets between the fabric layers making it twice as sorbent as a single ply polyester wipe.

Laundered and packed in a cleanroom, Quiltec I has laser-cut, heatsealed edges which reduce the number of releasable particles and fibres. As a knitted polyester product, it is abrasion and chemical resistant and extremely low in particles and fibres.

Sterile Quiltec Wipes are also laundered and packed in a cleanroom before sterilization via gamma irradiation. All Contec's sterile dry wipes are validated to a SAL of 10⁻⁶ in accordance with standards and recommended practices of the AAMI/ISO 11137 Guidelines for the sterilisation of medical devices.

Small packaging configurations in easy to open bags are ideal for sterile use and help keep wipe waste to a minimum. A certificate of sterility is provided with each shipment.

	Part No.	Size	Quantity
Quiltec I Wipes Flat stacked	QT1-99	230 x 230mm	50 per bag / 20 bags per case
	QT1-1212	300 x 300mm	50 per bag / 10 bags per case
	LWQT0019	460 x 460mm	25 per bag / 8 bags per case
Quiltec I Wipes Bulk	QT1-66B	150 x 150mm	200 per bag / 10 bags per case
	QT1-99B	230 x 230mm	150 per bag / 6 bags per case
	QT1-1212B/100	300 x 300mm	100 per bag / 5 bags per case
Sterile Quiltec I Wipes Flat stacked, double bagged	LWQS0001	230 x 230mm	25 per bag / 40 bags per case
	LWQS0002	300 x 300mm	25 per bag / 20 bags per case





- Recommended for ISO Class 3-8 environments
- Sealed edges to reduce particle and fibre generation
- High sorptive capacity and fast adsorption rate for superior spill control processed for superior cleanliness and absorbency
- Manufactured from 100% continuous filament polyester and specially processed for superior cleanliness and absorbency

Anticon Gold HeavyWeight Wipes

100% no-run interlock knit polyester with sealed edges and increased absorbency



Product information

Anticon Gold HeavyWeight 140g/m² Wipes are made from 100% continuous filament polyester with a double-knit no-run interlock construction. Anticon Gold HeavyWeight uses patented textile technology to achieve superior sorption characteristics for critical applications.

The sealed edges reduce particle and fibre generation. Anticon Gold HeavyWeight wipes' low sub-micron particles and fibre counts are ideal for use in the most critical environments. The wipes are cleanroom laundered and packed and exhibit very low particle and fibre counts.

Anticon Sterile Gold Wipes are a sterile version of Anticon Gold HeavyWeight wipes. These wipes are ideal for use in the most critical life science cleanrooms. They are ideal for disinfectant and solvent application and wiping to dry.

Conveniently packaged in easy tear bags containing only 20 wipes per package to eliminate wastage. Anticon Sterile Gold is sterilised via gamma irradiation to a sterility assurance limit of 10⁻⁶ and a certificate of sterility is provided with each shipment.

	Part No.	Size	Quantity	
Anticon Gold HeavyWeight Wipes	492224-789	230 x 230mm	150 per bag / 8 bags per case	
Flat stacked	492224-790	300 x 300mm	100 per bag / 4 bags per case	
	492224-783	390 x 460mm	75 per bag / 8 bags per case	
Anticon Gold HeavyWeight Wipes	492224-798	100 x100mm	600 per bag / 8 bags per case	
Bulk				
Anticon Sterile Gold Wipes	 Sterile	492226-942	300 x 300mm	20 per bag / 20 bags per case
Flat stacked				
Anticon Sterile Gold Wipes	 Sterile	492226-944	300 x 300mm	20 per bag / 20 bags per case
Flat stacked - triple packed				

Polynit Heatseal Wipes

100% no-run interlock knit polyester with sealed edges

Product information

Polynit Heatseal 140g/m² Wipes are made of 100% knitted textured polyester with laser-cut sealed edges for very low levels of particles and fibres. Polyester wipes are chemically resistant and exceptionally low in particles and extractable residues making them ideal for critical cleaning.

An interlock knit creates a durable fabric, the addition of a periodic additional stitch of a no-run interlock knit prevents the fabric unraveling creating an even more durable fabric with strong edges.

The wipes have good absorbency with solvents and are abrasion and chemical resistant.

Sterile Polynit Heatseal Wipes are gamma irradiated and validated per AAMI guidelines to a 10⁻⁶ SAL so can be used in the highest grade life science cleanrooms.

Sterile Polynit Heatseal LE Wipes have a guaranteed endotoxin level of <1 EU/wipe and are validated sterile to 10⁻⁶ SAL, making them ideal for use in product contact areas.

The wipes are half folded and triple packaged in linear tear outer bags for ease of transfer into Grades A/B cleanrooms. This smaller packaging takes up less space making it ideal for mini environments. The small quantity of wipes per package can easily be used during one cleaning session, eliminating waste.

A certificate of sterility and endotoxin limit is provided with each shipment.

- Recommended for ISO Class 3-8 environments
- Low levels of particles and fibres
- 100% knitted polyester is abrasion and chemical resistant
- Laser-cut, sealed edge prevents release of fibres
- Low endotoxin version available with a guaranteed level of <1 EU/wipe

	Part No.	Size	Quantity
Polynit Heatseal Wipes Flat stacked	PNHS-99	230 x 230mm	75 per bag / 16 bags per case
	PNHS-1212	300 x 300mm	75 per bag / 10 bags per case
Polynit Heatseal Wipes Enhanced Sorbency Flat stacked	LWPS0030	230 x 230mm	75 per bag / 16 bags per case
Polynit Heatseal Wipes Bulk	PNHS-99B	230 x 230mm	300 per bag / 4 bags per case
	PNHS-99B/150	230 x 230mm	150 per bag / 8 bags per case
Sterile Polynit Heatseal Wipes Flat stacked	PN-99IR	230 x 230mm	10 per bag / 100 bags per case
	LWPS0006	230 x 230mm	25 per bag / 48 bags per case
	LWPS0007	300 x 300mm	25 per bag / 40 bags per case
	LWPS1004	300 x 300mm	75 per bag / 8 bags per case
Sterile Polynit Heatseal LE Wipes Half folded	LWLE0001	230 x 230mm	10 per bag / 50 bags per case
	LWLE0002	300 x 300mm	10 per bag / 36 bags per case



- Recommended for ISO Class 5-8 environments
- Knife-cut edges create a very soft wipe so the whole of the wipe fabric can be used with no risk of scratching
- Very low levels of particles and fibres

Anticon 100 HeavyWeight Wipes


100% no-run interlock knit polyester with knife-cut edges

Product information

Contec's Anticon 100 HeavyWeight 140g/m² Wipes are made from 100% continuous filament polyester with a double-knit no-run interlock construction. The clean cut edges create a very soft wipe, where the whole of the wipe fabric can be used with no risk of scratching. The wipes are laundered and packed in a cleanroom and exhibit very low particle and fibre counts for a knife-cut wipe.

Using patented textile technology Anticon 100 HeavyWeight wipes achieve superior sorption capacity with a quick sorption rate.

Sterile Anticon 100 Wipes are also laundered and packed in a cleanroom before sterilisation via gamma irradiation. All Contec's sterile dry wipes are validated to a SAL of 10⁻⁶.

	Part No.	Size	Quantity
Anticon 100 HeavyWeight Wipes Flat stacked	492222-813	230 x 230mm	75 per bag / 16 bags per case
	492222-815	300 x 300mm	50 per bag / 8 bags per case
Anticon Sterile 100 Wipes Flat stacked	 492226-939	230 x 230mm	20 per bag / 40 bags per case



- Recommended for ISO Class 5-8 environments
- Laundered knitted 100% polyester fabric for extremely low levels of particles and fibres
- Soft edge is ideal for use on surfaces which are vulnerable to scratching

Polynit Wipes

100% no-run interlock knit polyester with knife-cut edges

Product information

Polynit Wipes are made of 100% knitted textured polyester with knife-cut edges for a very soft wipe. The soft edge is ideal for use on surfaces which are vulnerable to scratching. Polyester wipes are chemically resistant and exceptionally low in particles and fibres. An interlock knit creates a durable fabric, the addition of a periodic additional stitch of a no-run interlock knit prevents the fabric unraveling creating an even more durable fabric with strong edges.

The wipes are cleanroom laundered and packed, and have good absorbency with solvents. They are abrasion and chemical resistant.

	Part No.	Size	Quantity
Polynit Wipes Flat stacked	PN-44	100 x 100mm	300 per bag / 16 bags per case
	PN-99	230 x 230mm	75 per bag / 16 bags per case
	PN-1212	300 x 300mm	75 per bag / 10 bags per case
	PN-1818	460 x 460mm	50 per bag / 6 bags per case



- Recommended for ISO Class 3-8 environments
- Sealed edges reduce particle and fibre generation
- Lighter basis weight provides superior value for general cleaning applications

Anticon Gold StandardWeight Wipes

100% interlock knit polyester with sealed edges

Product information

Anticon Gold StandardWeight 120g/m² Wipes are made from 100% continuous filament polyester with a double-knit no-run interlock construction. The sealed edge reduces the amount of fibre released from the wipe. The wipes are cleanroom laundered and packed and generate very low levels of particles and fibres, helping to minimize contamination. These wipes are ideal for use in the most critical of cleanroom environments. The lighter basis weight provides superior value for general cleaning applications.

Using patented textile technology Anticon Gold StandardWeight wipes achieve superior sorption capacity with a quick sorption rate.

	Part No.	Size	Quantity
Anticon Gold StandardWeight Wipes Flat stacked	495353-902	230 x 230mm	75 per bag / 16 bags per case
	495353-904	300 x 300mm	50 per bag / 8 bags per case
Anticon Gold StandardWeight Wipes Bulk	495353-903	230 x 230mm	75 per bag / 16 bags per case



- Recommended for ISO Class 3-8 environments
- Laser-cut, which seals fibres at wipe's edge
- Extremely low in both particles and extractables


Polywipe-C Heatseal Wipes

100% interlock knit standard weight polyester with sealed edges

Product information

Polywipe-C Heatseal 120g/m² Wipes are made from a 100% knitted polyester that is laser-cut to bond the fibres at the edges of the wipe. The wipe is chemical resistant and exceptionally low in particles and extractable residue making it ideal for critical cleaning. The wipes are cleanroom laundered and packed.

Sterile Polywipe-C Heatseal Wipes are also cleanroom laundered and packed before sterilisation via gamma irradiation. All Contec's sterile dry wipes are validated to a SAL of 10⁻⁶.

	Part No.	Size	Quantity
Polywipe-C Heatseal Wipes Flat stacked	PCHS-99	230 x 230mm	75 per bag / 24 bags per case
	PCHS-1212	300 x 300mm	75 per bag / 10 bags per case
Sterile Polywipe-C Heatseal Wipes Flat stacked	 LWCS0033	230 x 230mm	150 per bag / 10 bags per case



- Manufactured from recycled plastic bottles - 35+ bottles per pack
- Recommended for ISO Class 3-8 environments
- Low levels of particles and fibres
- 100% knitted polyester is abrasion and chemical resistant
- Laser-cut, sealed edge prevents release of fibres

ReFIBE StandardWeight Heatseal Wipes

Recycled 100% no-run interlock knit polyester with sealed edges

Product information

ReFIBE StandardWeight Heatseal 124g/m² Wipes are made of recycled 100% knitted polyester with laser-cut sealed edges for very low levels of particles and fibres. Polyester wipes are exceptionally low in particles and extractable residues making them ideal for critical cleaning.

ReFIBE provides a sustainable solution for critical environments without jeopardizing quality or performance.

Each wipe is constructed from 100% post-consumer recycled plastic bottles (35+ bottles per pack of wipes) that have gone through a rigorous cleaning process before being converted to polyester chip. The chip is extruded and spun in a traditional yarn manufacturing process before being knitted into fabric using an interlock knit. An interlock knit creates a durable fabric, the addition of a periodic additional stitch prevents the fabric unraveling creating an even more durable fabric with strong edges.

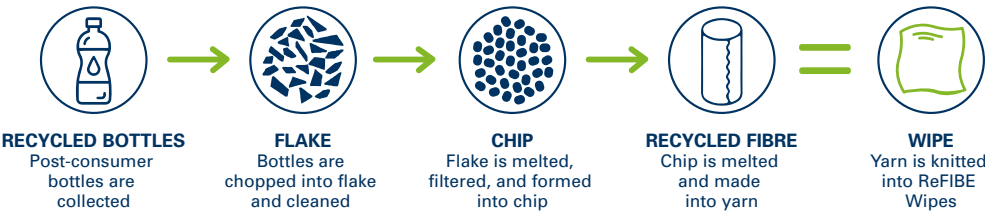
This fabric is converted and laundered exactly the same as Contec’s standard polyester heatsealed wipes. ReFIBE wipes are subject to the same quality and process control protocols as our virgin polyester products, eliminating the fear of compromising quality for sustainability. The wipes are cleanroom laundered and packed.

Sterile ReFIBE StandardWeight Heatseal Wipes are gamma irradiated and validated per AAMI guidelines to a 10⁻⁶ SAL so can be used in the highest grade life science cleanrooms.

ReFIBE Recycled 100% knitted polyester cleanroom wipes provide a sustainability story in a single-use world diverting plastic bottles from oceans and landfill. The use of recycled cleanroom wipes can help life science cleanroom users reduce their environmental impact and meets its sustainability goals.



How does it work?



	Part No.	Size	Quantity	Av. Recycled Bottles
ReFIBE StandardWeight Heatseal Wipes Flat stacked	RFHS-99	230 x 230mm	75 per bag / 24 bags per case	840 per case
	RFHS-1212	300 x 300mm	75 per bag / 10 bags per case	480 per case
Sterile ReFIBE StandardWeight Wipes Flat stacked	RFHS-99IR	230 x 230mm	25 per bag / 48 bags per case	560 per case
	RFHS-1212IR	300 x 300mm	25 per bag / 40 bags per case	640 per case





- Recommended for ISO Class 5-8 environments
- Knife-cut edges create a very soft wipe so the whole of the wipe fabric can be used with no risk of scratching
- Patented textile technology creates a polyester wipe with high absorbency

Anticon 100 StandardWeight Wipes

100% interlock knit polyester
with knife-cut edges

Product information

Contec's Anticon 100 StandardWeight Wipes are made from 100% continuous filament polyester with a double-knit no-run interlock construction. The clean cut edges create a very soft wipe, where the whole of the wipe fabric can be used with no risk of scratching.

The wipes are cleanroom laundered and packed and exhibit very low particle and fibre counts for a knife-cut wipe helping to minimize contamination. Using patented textile technology Anticon 100 StandardWeight Wipes achieve high sorption capacity with a quick sorption rate. Ideal for spill control as well as applying disinfectants and cleaning solutions.

Anticon 100 Wipes are the knife-cut equivalent of Anticon Gold StandardWeight Wipes.

	Part No.	Size	Quantity
Anticon 100 StandardWeight Wipes Flat stacked	495352-803	230 x 230mm	75 per bag / 16 bags per case
	495352-805	300 x 300mm	50 per bag / 8 bags per case
Anticon 100 StandardWeight Wipes Bulk	495352-804	230 x 230mm	75 per bag / 16 bags per case



- Recommended for ISO Class 5-8 environments
- Knife-cut edges create a very soft edged wipe
- Lighter basis weight provides superior value for general cleaning applications.

Polywipe-C Wipes

100% interlock knit standard weight
polyester with knife-cut edges

Product information

Polywipe-C 120g/m² Wipes are made from standard weight 100% knitted polyester that is knife-cut to create a soft edge. Soft edge wipes are ideal for use on surfaces which are vulnerable to scratching.

The wipe is chemical resistant and very low in particles and extractable residue making it ideal for critical cleaning. The wipes are cleanroom laundered and packed. The lighter basis weight provides superior value for general cleaning applications.

	Part No.	Size	Quantity
Polywipe-C Wipes Flat stacked	PC-99	230 x 230mm	75 per bag / 24 bags per case
	PC-1212	300 x 300mm	75 per bag / 10 bags per case

- 230 g/m² hybrid of polyester and microfibre for the most sorbent and clean wipe
- Laminated 2-ply wipe readily releases fluid to a surface
- Unique microfibre polyester yarn offers high sorptive capacity and fast absorption rate
- Sealed edges reduce particle and fibre generation

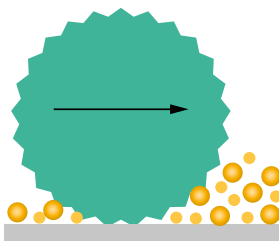
Contec Microfibre Wipes

Microfibre wipes are the premium fabric for removing residues from surfaces, with outstanding absorbency they are excellent for trapping and removing dry particles. New blends of microfibre and polypropylene produce a cost-effective single use wipe with all the benefits of microfibre.

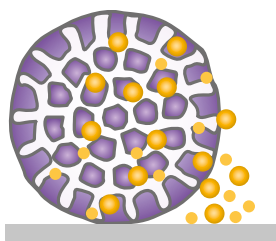
Microfibre was introduced in the late 1980's. The definition of a microfibre is a fibre with less than 1 decitex per filament, 1 decitex is 9/10 of a denier about 1/16th the diameter of a human hair. The fibres can be combined to create yarn which can be then be knitted or woven into a variety of constructions. Microfibre wipes can be made using 100% polyester fine filaments or split fibres that are a blend of polyester and nylon.

This split structure gives the wipe the ability to pick up particles even when dry, and can easily remove residues often without solvent. The increased surface area of a microfibre allows it to collect and hold dust, dirt and particles more effectively than rounded fabrics such as cotton. Virgin wipes are very soft so won't scratch surfaces, however, care should be taken when reusing microfibre wipes as particles can get stuck in the fibres which can then damage sensitive surfaces. Microfibre has a high sorption capacity around 6 to 8 times its own weight in water. The fast wicking ability means a wipe can remove spills quickly and easily, so it is very suitable for mop to dry applications.

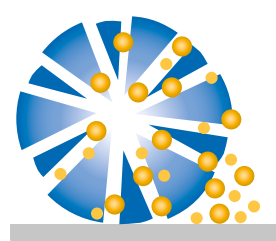
Contec has a range of microfibre wipes to choose from, 100% laundered polyester standard fibre/microfibre blend, with very low levels of fibres and particles, an 80% polyester/20% nylon split microfibre and a unique cost-effective microfibre solution which has microfibre polyester yarn stitched into a polypropylene substrate.



Standard Polyester



Extruded Microfibre



Split Microfibre



- 230 g/m² hybrid of polyester and microfibre for the most sorbent and clean wipe
- Laminated 2-ply wipe readily releases fluid to a surface
- Unique microfibre polyester yarn offers high sorptive capacity and fast absorption rate
- Sealed edges reduce particle and fibre generation

Anticon MicroQuilt Wipes


Polyester/microfibre hybrid

Product information

Anticon MicroQuilt combines the cleanliness and sorbent capacity of Quilted with the microfibre particle pick-up ability of Anticon Gold Sorb. This hybrid creates the most sorbent, cleanest wipe Contec offers. MicroQuilt is laser-cut with heatsealed edges and cleanroom laundered to reduce the number of releasable particles and fibres. Its unique microfibre construction provides superior residue and particle removal when used dry or wet.

The 2-ply, quilted layers absorb more liquid than other wipes but readily release fluids when applying to surfaces. Composed of microfibre polyester, the wipes are durable and compatible with a wide range of solutions and disinfectants. Anticon MicroQuilt is ideal for any cleanroom application requiring high sorption capacity and superior contaminant removal.

Sterile Anticon MicroQuilt Wipes are also cleanroom laundered and packed before sterilisation via gamma irradiation. All Contec's sterile dry wipes are validated to a SAL of 10⁻⁶. Conveniently packaged in easy tear bags containing only 25 wipes per package to eliminate wastage. A certificate of sterility is provided with each shipment.

	Part No.	Size	Quantity
Anticon MicroQuilt	495758-735	230 x 230mm	50 per bag / 20 bags per case
Flat stacked	495758-737	300 x 300mm	50 per bag / 10 wipes per bag
Anticon Sterile MicroQuilt	495758-736	230 x 230mm	25 per bag / 40 bags per case
Flat stacked 	495758-738	300 x 300mm	25 per bag / 20 bags per case



- Recommended for ISO Class 3-8 environments
- Unique microfibre provides superior residue and particle removal even when dry
- Sealed edges to reduce particle and fibre generation
- High sorption capacity and fast sorption rate for superior spill control

Anticon Gold Sorb Wipes

Blend of standard polyester and microfibre polyester with sealed edges

Product information

Anticon Gold Sorb is a unique wipe which combines the performance of a microfibre yarn with that of a polyester yarn to create a wipe with superior wiping and sorption characteristics.

The sealed edges of these wipes reduces the amount of fibres released from the wipe. Anticon Gold Sorb wipes have no abrasive borders, making them particularly suitable for cleaning sensitive components.

Anticon Sterile Gold Sorb is conveniently packaged in easy tear bags containing 25 wipes per package. Anticon Sterile Gold Sorb is sterilised via gamma irradiation, and a certificate of sterility is provided with each shipment.

	Part No.	Size	Quantity
Anticon Gold Sorb Wipes Flat stacked	492238-956	230 x 230mm	75 per bag / 16 bags per case
	492238-958	300 x 300mm	50 per bag / 8 bags per case
Anticon Gold Sorb Wipes Bulk	492238-957	230 x 230mm	75 per bag / 16 bags per case
	492238-959	300 x 300mm	50 per bag / 8 bags per case
Anticon Sterile Gold Sorb Wipes Flat stacked	492238-955	230 x 230mm	75 per bag / 16 bags per case
	492238-960	300 x 300mm	25 per bag / 40 bags per case





- Recommended for ISO Class 5-8 environments
- Holds more dirt than average wipes and provides more effective cleaning
- Ideal for surface cleaning and polishing

MicroSilk II Wipes

75% polyester/25% nylon microfibre wipe

Product information

MicroSilk wipes are made with fabric densely knitted by continuous microdenier filament. Excellent absorbency and a soft texture makes them an excellent wipe for cleaning delicate surfaces. MicroSilk II wipes are split microfibre which means the edges of the wipe are sealed for very low levels of particles and fibres.

The wipes are cleanroom laundered and double packed. Ideal for surface cleaning and polishing, the wipe easily removes both oil-based and water-based residues. The unique structure of microfibre improves the surface contact, holds more dirt than average wipes, and provides more effective cleaning.

	Part No.	Size	Quantity
MicroSilk II Wipes Flat stacked	LWMD0201	230 x 230mm	50 per bag / 20 bags per case



- Recommended for ISO Class 6-8 environments
- Microfibre is only applied to the wiping surface creating a cost-effective single use microfibre wipe
- Microfibre fabric easily picks up and retains particles

MicroGenesis Wipes

100% polyester microfibre yarn knitted into a thermally bonded polypropylene substrate

Product information

MicroGenesis delivers the maximum amount of microfibre to pick up and retain particles, dust and other contaminants in cleanrooms. For dry applications where particle pickup and retention is critical MicroGenesis delivers unprecedented performance.

The wipe is ideal for picking up the powder residue generated in tablet and fine powder pharmaceutical manufacturing or grease removal before manufacturing batches. In addition, Contec's unique processing gives the MicroGenesis wipe excellent absorbency characteristics making it ideal for wiping to dry and disinfectant application. It is safe for use with all disinfectants including chlorine and quaternary ammonium-based products.

	Part No.	Size	Quantity
MicroGenesis Wipes Bulk	LWMM0100	250 x 300mm	100 per bag / 8 bags per case
	LWMM0300	250 x 460mm	100 per bag / 4 bags per case



- Recommended for ISO Class 3-8 environments
- Polyester fabric is extremely low in both particles and extractables
- Good absorbency makes it compatible with many solvents

Polynit-Z Wipes

Knitted polyester electrostatic dissipative wipe

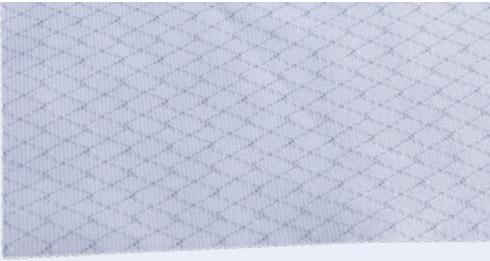
Product information

Polynit-Z Wipes are constructed using conductive yarns within the polyester interlock knit that features an unidirectional conductive pattern. It is a very clean static dissipative wipe that is well suited for applications sensitive to electrostatic discharge.

The average surface resistivity is 3.5×10^{10} ohms/sq. Polynit-Z wipes are laundered and packed in a cleanroom environment.

The laser-cut edges seal fibres at the wipe's edge. The wipes are ideal for cleaning the interior surface of process tools and other equipment.

	Part No.	Size	Quantity
Polynit-Z Wipes Flat stacked	LWZS0001	230 x 230mm	75 per bag / 16 bags per case



- Recommended for ISO Class 3-8 environments
- Knitted with a conductive fibre in a specially designed grid pattern that minimizes "hot spots"
- Antistatic fabric is abrasion and chemical resistant

StatZorb Wipes

Knitted polyester electrostatic dissipative wipe

Product information

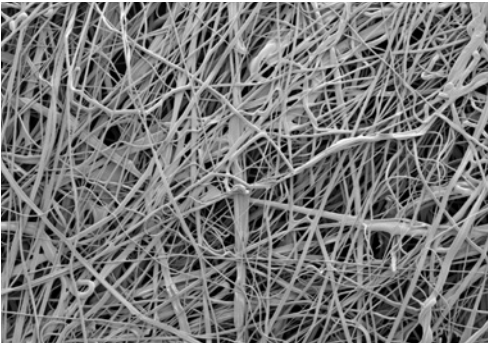
The StatZorb Wipe is made from polyester fabric with a conductive fibre knitted in a specially designed grid pattern that minimizes hot spots. The antistatic properties are uniform on both sides of the wipe. The surface resistivity is 43×10^7 ohms/sq and the static decay time is less than 1.5 seconds.

The wipes are cleanroom laundered and packed for a very low level of particles and fibres. The laser-cut edges seal particles at the wipes edge. The wipe are ideal for the dry wiping of sensitive electronic components and general cleaning in ESD sensitive areas. They are also suitable for use in disc drive or MR head manufacturing.

	Part No.	Size	Quantity
StatZorb Wipes Flat stacked	SZ-99	230 x 230mm	75 per bag / 24 bag per case



Nonwoven polyester



Meltblown polypropylene



Hydroentangled polyester/cellulose

"Contec offers a wide range of sterile and non-sterile nonwoven wipes"

Contec Nonwoven Wipes

Nonwoven wipes are used for a wide range of applications in controlled environments including cleaning, application of disinfectants, removal of residues, spill control, transfer disinfection as well as for general purpose wiping. Nonwoven wipes offer a variety of performance characteristics and excellent value.

Each type of fibre has a particular strength that makes it suitable for a different critical environment application. Polyester provides durability, chemical compatibility and cleanliness. Cellulose and rayon provide excellent absorbency. Polypropylene provides exceptional cleanliness and uniform application of fluids.

Most high quality nonwovens are made with a spunlaced process which hydroentangles the two fibres using high pressure jets of filtered water and cleans the fabric during the manufacturing process. No binders or additives are used resulting in a fabric which is low in fibres and residues. Another method of creating a nonwoven wipe is to use a thermal bonding process. This is used for the polypropylene wipes.

Nonwoven wipes substrates that are available, include 100% nonwoven polyester for low levels of fibres and particles and cost-effective polyester/cellulose blends which creates clean wipes with good wet strength and absorbency. Meltblown polypropylene provides a metered release of solvent so is especially suitable for the application of alcohol or disinfectant.

Hydroentangled 100% polyester

(Amplitude Delta) 100% nonwoven polyester wipes with no binders or additives. Cost-effective polyester wipe with excellent cleanliness and absorbency with solvents. Very soft wipe with both wet and dry strength.

Hydroentangled polyester/cellulose

(Amplitude EcoCloth, Amplitude Epsilon, Amplitude Prozorb, Amplitude Sigma, Amplitude Theta, SterileSorb) Hydroentangled polyester/cellulose wipes which are extremely sorbent with good wet strength. Excellent general purpose wipes.

Hydroentangled polyester/Lycocell

(Amplitude Kappa) A manufactured form of cellulose, Lycocell is very strong and sorbent. Sontara hydroentangled polyester/Lycocell wipes have been processed in such a way as to minimise endotoxin contamination.

Meltblown polypropylene

(Amplitude Helix) Meltblown polypropylene wipes are manufactured by thermally bonding very fine polypropylene fibres to form a very clean wipe fabric with good solvent resistance. An economical wipe with low particle generation. The fine filament structure allows a metered release of alcohol or disinfectant.

Thermally laminated polypropylene/cellulose

(Amplitude Zeta) Where increased sorption is required this 5-ply quilted wipe is highly sorptive with all fluids. Inner cores of cellulose between layers of polypropylene allows fluids to be absorbed and "locked" into the pockets created by the quilting process.



- Recommended for ISO Class 5-8 environments
- Hydroentangled process provides a soft texture for sensitive applications
- Higher levels of cleanliness compared to similar nonwoven wipes
- Low endotoxin option available - <20 EU/wipe
- Low levels of particles and fibres

Amplitude Kappa Wipes

Polyester/Lyocell nonwoven wipes

Product information

A special hydroentangling process washes the Amplitude Kappa fabric, made of 58% polyester and 42% Lyocell (high quality rayon), to provide higher levels of cleanliness, absorbency and softness compared to similar nonwoven wipes.

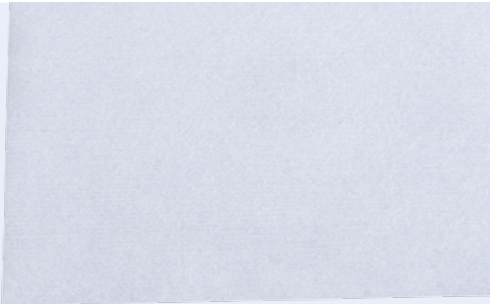
Featuring a fine aperture and low levels of fibres and particles, these wipes are ideal for wiping delicate surfaces and sensitive components, as well as for other critical applications. Amplitude Kappa wipes are highly sorbent with both water and solvents and have low levels of particles and fibres. Ideal for wiping delicate surfaces such as optics, plastic and sensitive components or polishing metal surfaces.

Amplitude Kappa Sterile LE Wipes are made with Sontara Lyocell/ polyester blend fabric These low endotoxin wipes have excellent absorbency and are validated sterile. Amplitude Kappa Sterile LE wipes are lot tested and low endotoxin certified to <20 EU/wipe.

The packaging allows for easy opening even when wearing gloves and the small quantities per pack minimize the possibility of any wastage. These wipes are ideal when increased absorbency is needed or a textured surface is required for efficient cleaning and particle removal. The wipes are also highly suitable for spill control and wiping-to-dry.

	Part No.	Size	Quantity
Amplitude Kappa Wipes Flat stacked	AML0003	230 x 230mm	250 per bag / 12 bags per case
	AML0004	300 x 300mm	125 per bag / 18 bags per case
Amplitude Sterile Kappa LE Wipes Flat stacked	NWP0001	230 x 230mm	25 per bag / 40 bags per case
	NWP0002	300 x 300mm	25 per bag / 40 bags per case





- Recommended for ISO Class 5-8 environments
- 69g/m² 100% nonwoven polyester - a cost-effective polyester wipe
- Highly durable with good wet and dry strength

Amplitude Delta Wipes

100% nonwoven polyester wipes

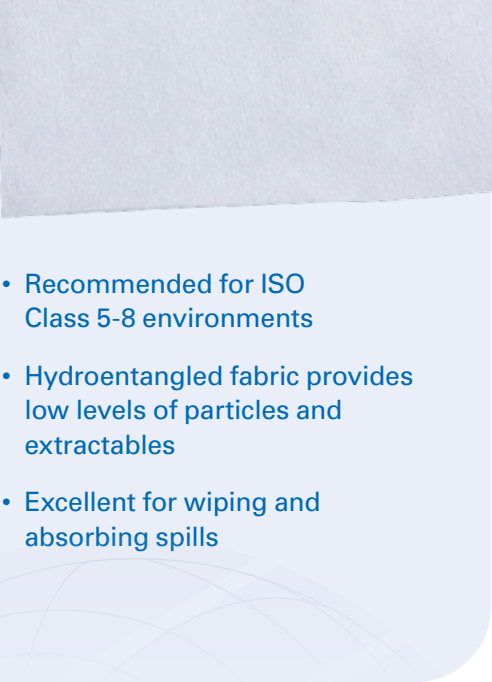
Product information

Amplitude Delta is made of 100% nonwoven polyester manufactured using a hydroentangling process with no binders or additives. It is a cost-effective polyester wipe which is very low in both particles and extractables.

Its open fibre structure makes it highly sorbent. It is a very soft wipe with both good wet and dry strength.

The 100% polyester is compatible with a wide range of solvents and disinfectants including hypochlorites.

	Part No.	Size	Quantity
Amplitude Delta Wipes Flat stacked	AMDE0003	100 x 100mm	1200 per bag / 12 bags per case
	AMDE0004	150 x 150mm	300 per bag / 15 bags per case
	AMDE0001	230 x 230mm	300 per bag / 12 bags per case
	AMDE0002	300 x 300mm	150 per bag / 16 bags per case



- Recommended for ISO Class 5-8 environments
- Hydroentangled fabric provides low levels of particles and extractables
- Excellent for wiping and absorbing spills

Amplitude Sigma Wipes

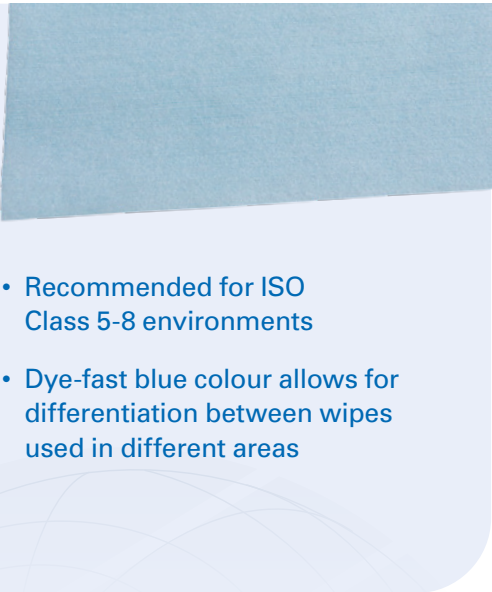
Cellulose/polyester nonwoven wipes

Product information

Amplitude Sigma is a hydroentangled blend of 55% cellulose and 45% polyester. It is highly sorbent, has excellent durability and good cleanliness. Amplitude Sigma is strong and durable wet or dry making it excellent for use in general cleaning and spill pick up.

SterileSorb Wipes are sterilised via gamma irradiation, and a certificate of sterility is provided with each shipment. These wipes are packaged in linear tear inner and outer bags for ease of opening, even with gloved hands. Embossed lot numbers on both inner and outer bags ensure lot traceability.

	Part No.	Size	Quantity
Amplitude Sigma Wipes Flat stacked	AMSI0001	230 x 230mm	300 per bag / 12 bags per case
	AMSI0002	300 x 300mm	150 per bag / 18 bags per case
	AMSI0003	460 x 460mm	75 per bag / 10 bags per case
SterileSorb Wipes Flat stacked	C2-99IR/25	230 x 230mm	25 per bag / 60 bags per case
	C2-1212IR	300 x 300mm	25 per bag / 42 bags per case



- Recommended for ISO Class 5-8 environments
- Dye-fast blue colour allows for differentiation between wipes used in different areas

Amplitude Epsilon Wipes

Blue cellulose/polyester nonwoven wipes

Product information

Amplitude Epsilon is made of a special grade blue cellulose and polyester hydroentangled to form a wipe with improved cleanliness and excellent absorbency.

The cellulose uses a dye fast colour, to minimize colour bleeding. The blue colour allows for differentiation in critical areas. Good for wet areas requiring spill pick up and clean up.

	Part No.	Size	Quantity
Amplitude Epsilon Wipes Flat stacked	AMEP0001	230 x 230mm	300 per bag / 12 bags per case
	AMEP0002	300 x 300mm	150 per bag / 20 bags per case

Amplitude EcoCloth Wipes

Cellulose/polyester nonwoven
wipes with additional loft

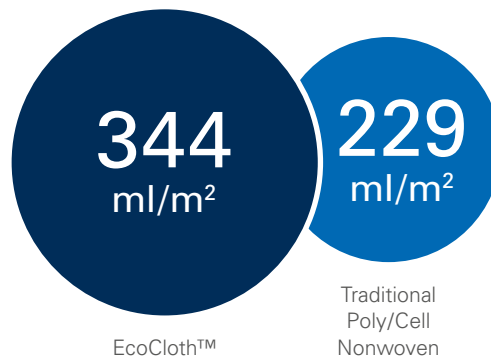
Product information

The EcoCloth wipe has been engineered to provide greater thickness in a lighter weight material. Amplitude EcoCloth is a hydroentangled cellulose/polyester fabric with additional loft.

It is lightweight but has excellent absorbency which exceeds comparable standard cellulose/polyester wipes. The increased thickness greatly enhances the sorbent capacity and also makes it easier for operators to pick up one wipe at a time.

Amplitude EcoCloth is a cost-effective solution for general purpose applications such as product transfer, wiping-to-dry and absorbing spills. Where customers are looking for ways to reduce their solid waste disposal for either financial or environmental reasons, the combined effect of superior performance and lighter weight gives a potential reduction in solid waste in excess of 40% compared to standard cellulose/polyester wipes. This makes Amplitude EcoCloth a very environmentally friendly choice.

Ever conscious of the environment, Contec developed Amplitude EcoCloth with a view to help customers reduce their solid waste. Amplitude EcoCloth is a slightly lower basis weight wipe than a standard polyester/cellulose wipe. However, due to additional loft in the fabric, this wipe has greater absorbency in terms of weight to capacity.



The lower basis weight of Amplitude EcoCloth can reduce your solid waste by up to 40%. This makes Amplitude EcoCloth a very environmentally friendly choice.

- Recommended for ISO Class 5-8 environments
- Low basis weight cellulose/polyester wipe with additional loft for greater absorbency
- Most sorbent of all cellulose/polyester wipes
- The lighter weight with the same performance can reduce solid waste in excess of 40%

	Part No.	Size	Quantity
Amplitude EcoCloth Wipes Flat stacked	AMEC0001	100 x 100mm	300 per bag / 48 bags per case
	AMEC0002	150 x 150mm	300 per bag / 20 bags per case
	AMEC0003	230 x 230mm	300 per bag / 12 bags per case
	AMEC0004	300 x 300mm	150 per bag / 14 bags per case
	AMEC0005	460 x 460mm	75 per bag / 10 bags per case



- Recommended for ISO Class 5-8 environments
- Textured surface promotes effective cleaning and particle removal
- Excellent absorbency and quickest rate of absorbency of any similar weight nonwoven wipe

Amplitude Prozorb Wipes

Textured cellulose/polyester nonwoven wipes

Product information

Amplitude Prozorb Wipes are a hydroentangled blend of cellulose and polyester, produced through a special process that creates apertures in the fabric while enhancing the thickness and providing excellent cleanliness. The resulting wipe has a durable textured surface that promotes its cleaning and particle removal capability.

This unique manufacturing process also give this wipe excellent absorbency, it probably has the greatest level of intrinsic absorbency and quickest rate of absorbency of any similar weight nonwoven wipe. This coupled with the low level of particles and extractables make this wipe ideal for spill clean up in critical environments, biofilm and residue removal, product wipe down prior to cleanroom entry and wiping-to-dry.

	Part No.	Size	Quantity
Amplitude Prozorb Wipes Flat stacked	PZ-99	230 x 230mm	200 per bag / 12 bags per case
	PZ-1212	300 x 300mm	100 per bag / 18 bags per case



- Recommended for ISO Class 5-8 environments
- Economical and cost-effective nonwoven wipe
- Lightweight sorbent wipe

Amplitude Theta Wipes

Cellulose/polyester nonwoven wipes

Product information

Amplitude Theta is made from a lightweight hydroentangled cellulose/ polyester which creates an economical absorbent wipe ideal for general cleaning applications. It has excellent durability and absorbency. Designed for nonabrasive applications, such as general purpose wiping and polishing of surfaces.

	Part No.	Size	Quantity
Amplitude Theta Wipes Flat stacked	AMTH0001	230 x 230mm	300 per bag / 12 bags per case
	AMTH0002	300 x 300mm	150 per bag / 22 bags per case



- Recommended for ISO Class 6-8 environments
- 5-ply quilted pattern allows for segregation by appearance
- High level of cleanliness for a general purpose wipe

Amplitude Zeta Wipes

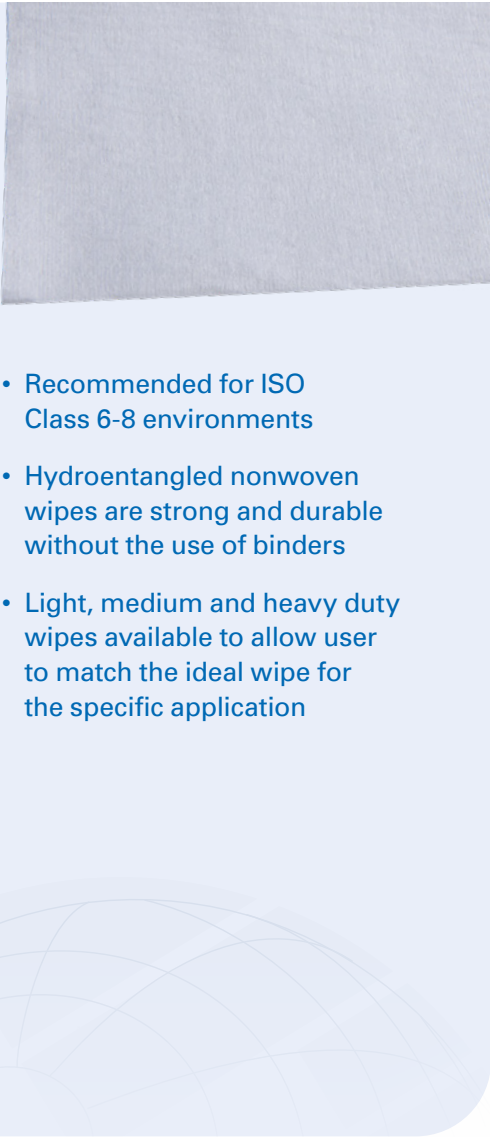
Thermally bonded polypropylene and cellulose quilted nonwoven wipes

Product information

Amplitude Zeta Wipes are made from a 5-ply thermally bonded substrate which comprises of 2 layers of cellulose sealed between layers of meltblown polypropylene. This creates a material which is very absorbent and has a high level of cleanliness.

The wipes have good chemical compatibility and are resistant to most disinfectants and solvents, including acids. Absorbent enough for solvent and acid spills, they are also ideal for wiping to dry applications. Amplitude Zeta wipes make useful tray liners and are suitable for general and lab area applications.

	Part No.	Size	Quantity
Amplitude Zeta Wipes	AMZE0001	200 x 230mm	150 per bag / 12 bags per case
Flat stacked	AMZE0002	280 x 300mm	75 per bag / 20 bags per case



- Recommended for ISO Class 6-8 environments
- Hydroentangled nonwoven wipes are strong and durable without the use of binders
- Light, medium and heavy duty wipes available to allow user to match the ideal wipe for the specific application

TuffStuff Wipes

Critical Task Wipes

Product information

TuffStuff Wipes are high quality critical task wipes manufactured from hydroentangled cellulose/polyester. The wipes contain no binders or adhesives. Available in Light, Medium and Heavy Duty versions, these wipes are solvent resistant and maintain their strength even when wet.

The wipes are creped to provide a soft feel. TuffStuff wipes offer exceptional durability and cleanliness making them ideal for critical cleaning in lower grade cleanrooms and outer areas.

TuffStuff Wipes are available in multiple sizes, weights, and packaging configurations to meet the various customer needs.



	Part No.	Size	Quantity
TuffStuff Heavy Duty Wipes - Quarter folded	C1C1217Q	300 x 430mm	500 per bag / 2 bags per case
TuffStuff Heavy Duty Wipes - Pop-up dispenser box	TSWC0917	230 x 420mm	100 per box / 8 boxes per case
	TSWC1217	300 x 420mm	125 per box / 2 boxes per case
TuffStuff Heavy Duty Wipes - Roll in a dispenser box	TSWC1214	300 x 330mm	500 per roll / 1 roll per case
TuffStuff Medium Duty Wipes - Quarter folded	TSWL1213	300 x 330mm	50 per bag / 18 bags per case
	TSWL1217	300 x 420mm	50 per bag / 18 bags per case
TuffStuff Light Duty Wipes - Quarter folded	TSWS1213	300 x 330mm	50 per bag / 10 bags per case
TuffStuff Light Duty Wipes - Perforated roll	TSWS1014	240 x 340mm	500 wipes per roll



- Strong and absorbent
- Suitable for high temperature applications
- Durable fabric for tough tasks
- Bias cut edges to reduce unraveling

Twill Jean Wipes

Woven cotton twill wipes

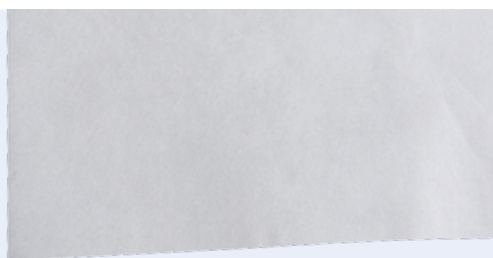
Product information

The Twill Jean Wipe is a 100% cotton fabric, woven in a 2 x 1 twill construction.

The wipes are very absorbent and have high thermal stability for high temperature applications.

The edges are bias cut to prevent unraveling. Excellent for spill pick up or general cleaning in lower grade areas.

	Part No.	Size	Quantity
Twill Jean Wipes Flat stacked	TJ-99	230 x 230mm	300 per bag / 12 bags per case
	TJ-1212	300 x 300mm	150 per bag / 10 bags per case



- Recommended for ISO Class 6-8 environments
- Long staple fibres create a nonabrasive wipe which is also absorbent
- Nonwoven wipe with very low levels of extractables

Amplitude Optic Wipes

Optical grade cellulose wipes

Product information

Amplitude Optic wipes are 100% nonwoven cellulose. The wipe consists of long staple fibres which are wet laid in a paper making process to form an extremely clean sheet.

It features very low levels of extractables and only moderate particle generation. The wipe has a nonabrasive surface texture. The wipes are both absorbent and optical grade.

These nonwoven wipes were specifically designed for the delicate cleaning of optical products and microminiature electronic components. It can also be used as a lining for cleanroom surfaces and trays.

	Part No.	Size	Quantity
Amplitude Optic Wipes Flat stacked	C6-99	230 x 230mm	500 per bag / 25 bags per case
	C6-1212	300 x 300mm	500 per bag / 20 bags per case



- Range of substrates and formats suitable for all areas of the cleanroom facility
- Easy-to-use, allowing rapid, effective and efficient application of the alcohol solution
- Presaturated wipes significantly reduce airborne levels of alcohol solution and improve operator safety
- Improve process control and repeatability

"Contec offers a wide range of sterile and non-sterile BPR authorised presaturated wipes"

Contec Presaturated Wipes

Presaturated wipes can offer many benefits over bottled alcohol and dry wipes for cleanroom use. They reduce solvent use and increase convenience in hand wiping. Since they provide exceptional solvent control presaturated wipes are widely used by the medical device and pharmaceutical industries.

Contec supplies two ranges of presaturated wipes, PROSAT in resealable pouches and SATWIPES packaged in reusable canisters.

Wipes are available as 100% polyester knits for very low levels of fibres and particles down to cost-effective polyester/cellulose blends, so suitable for all grades of cleanroom. For product contact areas, wipes with guaranteed low levels of endotoxins are available.

Contec's presaturated wipes can be tailored to your specific requirements. Variables include fabric selection, solvent, saturation levels from 9 - 99% IPA and packaging.

EU Biocides Regulation

Biocidal products manufactured in or imported into the European Union (EU) must be authorised for compliance with the requirements of the EU Biocides Regulation (BPR) and any relevant national legislation before being placed on the market. Biocidal products have been regulated by the EU BPR since 1 Sept 2013.

The active substance approval process is ongoing and is gradually replacing national regulations. Each biocidal active substance is at a different stage in the regulatory process.

Biocidal products, which are not going through the authorisation process can no longer be placed on the market from 180 days after; and no longer used 365 days after; the date of approval of the active substance, such as isopropanol.

The deadline to submit dossiers for 70% IPA presaturated wipes intended for surface disinfection was 1st July 2016. From 1st Jan 2017, 70% IPA wipes for surface disinfection, for which a dossier had not been submitted for EU BPR approval, can no longer be sold legally in the EU.

Contec intends to submit applications for Union Authorisation for all its biocidal product families to ensure continuity of supply throughout the entire EU/EEA.

Contec's EU BPR product dossier for all products containing 70% IPA has received Union Authorisation from the ECHA Biocidal Products Committee. All Contec's IPA products including presaturated wipes are authorised for sale in all EU countries. The Authorisation Number for the product family is EU-0020460-0000.



Features and benefits

Guaranteed saturation levels with either IPA or Denatured Ethanol

- Reduces airborne levels of alcohol helping to meet Health and Safety limits
- Reduces hazardous waste by up to 40%
- Reduces validation work
- Reduces costs
- Reduces inventory and storage space required
- Increases operator and environmental safety
- Increases process control and repeatability
- Increases convenience



Compact PROSAT Pouches



Large PROSAT Pouches



Refillable canisters



Sterile canister



Centre-pull container



Slide 'n Seal Bag

Presaturated Wipes Options

Contec's presaturated wipes are available in a number of formats specifically designed for different areas of use within the cleanroom.

Resealable pouches

For sterile and small-area use, presaturated wipes are available folded in resealable pouches. This makes the packaging compact for use in high grade areas where space is a constraint. Sterile products are usually packed in small quantities of wipe per pouch so the wipes can easily be used up in one session to avoid wastage.

Alternatively for larger areas, more cost-effective resealable pouches with flat stacked wipes are available.

All PROSAT branded wipes are available in peel and reseal pouches.

Centre-pull canisters

Originally developed as a safe and better way to handle aggressive solvents, Contec SATWIPEs are presaturated wipes dispensed from a centre-pull roll in a reusable canister. The easily closed canister lid helps maintain saturation levels and reduce airborne vapours.

SATWIPE Delta and Sigma wipes are provided with a small reusable canister to reduce packaging waste and 12 refill rolls. To preserve product integrity the rolls are packaged in specially designed pouches, which are opened and loaded inside the SATWIPE canister.

Sterile canister wipes such as SATWIPE Theta are provided in individually double bagged canisters. Polyester/Rayon SATWIPEs are available in a large centre-pull container (bucket).

Slide 'n Seal Bags

Presaturated Polywipe-C Heatseal Wipes are available bulk packed in Contec's Slide 'n Seal Bag. This is a resealable bag that allows easy dispensing of the presaturated wipes. A tight seal is ensured every time the bag is closed without the use of any adhesives ensuring the wipes remain saturated throughout the period of use. The gusseted base means the bag will stand independently for wipes to be easily removed.



- Recommended for ISO Class 3-8 environments
- Low in both particles and extractable contaminants
- 100% knitted polyester is abrasion and chemical resistant
- Resealable pouch preserves cleanliness and reduces solvent evaporation
- Available sterile and with guaranteed low levels of endotoxins

PROSAT Polynit Heatseal Wipes

100% no-run interlock knit polyester wipes presaturated with 70% IPA

Product information

PROSAT Polynit Heatseal Wipes are manufactured from 100% knitted textured polyester with laser-cut sealed edges for very low levels of particles and fibres.

Polyester wipes are chemically resistant and exceptionally low in particles and fibres. The wipes are cleanroom laundered and packed.

The wipes are presaturated with a blend of 70% IPA and 30% Deionised Water. Presaturated wipes ensure consistent saturation of each wipe independent of the operator. They can increase solvent control and accountability as well as reduce VOC emissions. The wipes are provided in convenient and easy-to-use peel and reseal pouches.

PROSAT Polynit Heatseal Wipes are available sterile by gamma irradiation, validated per AAMI Guidelines to a 10⁻⁶ SAL, so can be used in the highest grade life science cleanrooms. Each resealable pouch contains a small number of wipes eliminating any waste at the end of a session.

PROSAT Sterile Polynit Heatseal LE Wipes are made from the same 100% knitted polyester but presaturated with a blend of 70% IPA and 30% Water for Injection (WFI). Each lot is tested before release and low endotoxin certified to <1 EU/wipe. The low levels of endoxins, and particles and fibres make these wipes ideal for use on product contact surfaces.

PROSAT Sterile Polynit Heatseal LE Wipes are either individually double or triple bagged for easy entry into the sterile suite. The pouches have been reduced in size and fitted with a hanging slot* to be easy-to-use in mini environments.

(* Not PSWE0002-BPR)



BPR authorised

	Part No.	Size	Quantity
PROSAT Polynit Heatseal Wipes Presaturated with 70% IPA and 30% DI Water	PS-HS9-7030-BPR (flat stacked)	230 x 230mm	30 per pouch / 30 pouches per case
PROSAT Sterile Polynit Heatseal Wipes Presaturated with 70% IPA and 30% DI Water	PSPS0076-BPR (folded)	230 x 230mm	20 per pouch / 40 pouches per case
	PSPS0091-BPR (flat stacked)	300 x 300mm	20 per pouch / 20 pouches per case
PROSAT Sterile Polynit Heatseal LE Wipes Presaturated with 70% IPA and 30% Water for Injection	PSWE0001-BPR (folded)	230 x 230mm	10 per pouch / 55 pouches per case
	PSWE0002-BPR (flat stacked)	300 x 300mm	30 per pouch / 15 pouches per case
	PSWE0003-BPR (folded)	300 x 300mm	10 per pouch / 30 pouches per case



- Recommended for ISO Class 3 - 8 environments
- Very low in particle and fibre generation to prevent contamination
- Small number of wipes per resealable pouch helps eliminate waste
- Slide 'n Seal bags allow easy dispensing of bulk non-sterile wipes

PROSAT Polywipe-C Heatseal Wipes

100% interlock knit standard weight polyester presaturated with 70% IPA

Product information

PROSAT Polywipe-C Heatseal Wipes are made from a standard weight 120 g/m² 100% knitted polyester that is laser-cut to bond the fibres at the edges of the wipe. Laser cutting seals the fibres at the edge of the wipe reducing particle and fibre generation. These wipes are presaturated with 70% IPA and 30% Deionised Water.

The wipes are chemically resistant and low in particles and extractable residue making it ideal for critical cleaning. The wipes are cleanroom laundered and packed.

The non-sterile wipes are available bulk packed in Contec's Slide 'n Seal Bag. This is a resealable bag that allows easy dispensing of the presaturated wipes. A tight seal is ensured every time the bag is closed without the use of any adhesives. The gusseted base means the bag will stand independently for wipes to be easily removed. Both types of packaging ensure the wipes remain saturated throughout the period of use.

PROSAT Sterile Polywipe-C Heatseal Wipes are gamma irradiated and validated per AAMI Guidelines to a 10⁻⁶ SAL, so can be used in the highest grade life science cleanrooms. The sterile wipes are provided in convenient and easy-to-use peel and reseal pouches. The resealable pouches have a small number of wipes per pouch to reduce waste and control saturation volume and cleanliness.



BPR authorised

	Part No.	Size	Quantity
PROSAT Polywipe-C Heatseal Wipes with Slide 'n Seal Bags Presaturated with 70% IPA and 30% DI Water	PSCS0009B *	230 x 230mm	60 per bag / 12 bags per case
	PSCS0012B *	300 x 300mm	30 per bag / 12 bags per case
PROSAT Sterile Polywipe-C Heatseal Wipes Presaturated with 70% IPA and 30% DI Water	PSCS0009-BPR (folded)	230 x 230mm	20 per pouch / 24 pouches per case
	PSCS0012-BPR (folded)	300 x 300mm	20 per pouch / 24 pouches per case



* These products are also covered by the BPR family authorisation.



- Recommended for ISO Class 5-8 environments
- Small size so cost-effective as wipe is not oversized for intricate tasks
- Highly sorbent with good wet strength
- Available validated sterile

PROSAT Sterile Vial Wipes

Knitted and nonwoven polyester wipes presaturated with 70% alcohol





Product information

Contec can provide a choice of small, sterile, presaturated wipes ideal for the wiping of vial tops, or other applications where a large volume but small wipes are needed.

Contec Sterile Vial Wipes are made from either 100% knitted polyester (Polynit Heatseal) or a more economical nonwoven polyester (Amplitude Delta) presaturated with a blend of 70% IPA and Deionised water. Both wipes generate a low level of particles and fibres, the knitted polyester generates lower amounts than the nonwoven polyester.

The wipes are provided in convenient and easy-to-use, low-profile, peel and reseal cleanroom-compatible packaging which provides both quick access and easy closure, and requires minimal space in the isolator or UDAF cabinet. The resealable pouches preserve solvent saturation and cleanliness.

PROSAT Sterile Vial Wipes are gamma irradiated and validated per AAMI Guidelines to a 10⁻⁶ SAL, so can be used in all grades of life science cleanroom. These small high quality wipes can be used in place of sterile individually wrapped alcohol prep wipes which generate significantly more waste and particles in the product contact area.

	Part No.	Size	Quantity
PROSAT Sterile Polynit Heatseal Wipes Knitted Polyester presaturated with 70% IPA	 PSPS0044*	100 x 100mm	20 per pouch / 64 pouches per case
Contec Critical Site Sterile Wipes Nonwoven Polyester presaturated with 70% IPA	 HCPS6044*	100 x 100mm	60 per pouch / 24 pouches per case

* These products are also covered by the BPR family authorisation.



- Recommended for ISO Class 5-8 environments
- Hydroentangled polyester fabric is highly sorbent with good wet strength
- Low in particles and fibres
- Ideal cost-effective polyester wipe

PROSAT Sterile Delta Wipes

100% nonwoven polyester wipes
presaturated with 70% IPA




Product information

PROSAT Sterile Delta Wipes are made from a 100% nonwoven polyester fibres which are hydroentangled together using no binders or additives. The resulting fabric is extremely soft, clean and strong. The wipes are very low in particles, fibres and extractables.

PROSAT Sterile Delta Wipes are a cost-effective polyester wipe with excellent cleanliness and wet strength, the wipes can be used for many general cleaning and disinfecting applications.

The wipes are sterilised by gamma radiation and validated sterile to AAMI Guidelines so are ideal for use in higher grade pharmaceutical cleanrooms. The wipes are provided in convenient and easy-to-use peel and reseal pouches.

	Part No.	Size	Quantity
PROSAT Sterile Delta Wipes Presaturated with 70% IPA and 30% DI Water 	PS-7030IR-BPR (folded)	230 x 230mm	20 per pouch / 40 pouches per case



- Recommended for ISO Class 5-8 environments
- Semiconductor grade solution is 0.2 micron filtered and meets SEMI requirements for metals
- Durable nonwoven polyester is low in both particles and extractables

PROSAT PS-Si Delta Wipes

100% nonwoven polyester wipes
presaturated with 10% IPA

Product information

PROSAT PS-Si presaturated wipes feature 100% nonwoven polyester presaturated with a blend of 10% IPA and 90% DI Water. Designed for the semiconductor industry, the PROSAT PS-Si provides the cleanest nonwoven wipe available. The 100% nonwoven polyester fibres are hydroentagled into an extremely soft, clean, and strong fabric which is very low in both particles and extractables.

The blend of 10% IPA and 90% deionised water combines cleaning effectiveness with safety. The semiconductor grade solution is 0.2 micron filtered and meets SEMI specifications for metals.

Available in convenient, easy-to-use resealable pouches which are individually lot numbered for traceability. PROSAT PS-Si wipes are an effective, efficient and convenient method for cleaning process tools and other equipment.

	Part No.	Size	Quantity
PROSAT PS-Si Delta Wipes Presaturated with 10% IPA and 90% Deionised Water	PS-Si (folded)	230 x 230mm	30 per pouch / 50 pouches per case



- Recommended for ISO Class 5-8 environments
- Hydroentangled polyester fabric is highly sorbent with good wet strength
- Low in particles and fibres
- Ideal cost-effective polyester wipe

SATWIPES Delta Wipes

100% nonwoven polyester wipes
presaturated with 70% IPA



Product information

SATWIPES Delta consists of a perforated roll of saturated wipes which are dispensed through a centre-pull canister. The wipes consist of 100% nonwoven polyester fabric creating a soft, durable, and clean wipe. The wipes are very low in particles, fibres, and extractables. SATWIPES Delta are a cost-effective polyester wipe with excellent cleanliness and wet strength, the wipes can be used for many general cleaning applications.

To reduce packaging waste, each case of SAT-C3-7030-BPR is supplied with one canister and 12 refill rolls. To preserve product integrity the rolls are packaged in specially designed pouches, which are opened and loaded inside the SATWIPES canister. Refill pouches can be purchased separately, SAT-C3-7030/18-BPR. Additional canisters can also be purchased SAT-CAN120.

	Part No.	Size	Quantity
SATWIPES Delta Wipes Presaturated with 70% IPA and 30% Deionised Water	SAT-C3-7030-BPR	150 x 230mm	100 per roll / 12 rolls and 1 canister per case
	SAT-C3-7030/18-BPR	150 x 230mm	100 per roll / 18 rolls per case
SATWIPES Canister	SAT-CAN120		10 canisters per case



- Recommended for ISO Class 5 - 8 environments
- Low in particles and fibres making an excellent general purpose wipes
- Solvent use is reduced by up to 35%

SATWIPES Delta Wipes

100% nonwoven polyester wipes
presaturated with 99% IPA

Product information

SATWIPES Delta consists of a perforated roll of saturated wipes which are dispensed through a centre-pull canister. Presaturated with 99% IPA the wipes are ideal for cleaning and residue removal in critical manufacturing. The wipes consist of 100% nonwoven polyester fabric creating a soft, durable, and clean wipe.

The use of a presaturated wipe provides a safe cleaning option when using a high concentration of solvent. Solvent use is reduced by up to 35%. To reduce packaging waste, each case is supplied with one canister and 12 refill rolls. To preserve product integrity the rolls are packaged in specially designed pouches, which are opened and loaded inside the SATWIPES canister. Additional canisters can also be purchased SAT-CAN120.

	Part No.	Size	Quantity
SATWIPES Delta Wipes Presaturated with 99% IPA	SAT-C3-100	150 x 230mm	100 per roll / 12 rolls and 1 canister per case
SATWIPES Canister	SAT-CAN120		10 canisters per case



PROSAT Meltblown Polypropylene Wipes

Presaturated with 70% IPA or 70% Denatured Ethanol

Product information

PROSAT meltblown polypropylene wipes offer exceptional cleanliness and are suitable for use in a wide variety of critical environments. Saturated with a solution of 70% IPA or denatured ethanol with 30% deionised water, the wipes provide a uniform and consistent application of the solution to the surface.

PROSAT Meltblown Polypropylene wipes are exceptionally clean and also free from additives of any kind. This particular meltblown polypropylene contains very low levels of sodium and other ions. The meltblown polypropylene wipes provide a consistent release of solvent to thoroughly remove surface contaminants in critical environments.

The wipes are provided folded in convenient and easy-to-use peel and reseal pouches. Suitable for use in many critical environments, PROSAT meltblown polypropylene wipes are ideal for wiping articles prior to pass through, cleaning process tools and other equipment, general surface cleaning and cleaning prior to decal application. The solvent blend meets either SEMI specifications for metals and contaminants, ensuring the wipes are suitable for use in microelectronic facilities or USP grade for life science cleanrooms.

Contec's PROSAT Sterile Polypropylene wipes are available sterile by gamma irradiation validated per AAMI Guidelines to a 10^{-6} SAL, so can be used in the highest grade life science cleanrooms. The sterile pouches have a smaller number of wipes per pouch to ensure all wipes can be used up in one session.

Contec's PROSAT® Sterile Polypropylene Low Endotoxin wipes are also presaturated with 70% USP grade IPA and 30% deionised water, but have a guaranteed low endotoxin level. Each lot is tested before release and low endotoxin certified to <20 EU/wipe, eliminating the risk of introducing endotoxins and other contaminants into product contact areas.

- Recommended for ISO Class 5-8 environments
- Meltblown polypropylene fabric is exceptionally clean and free from additives
- Low in particles and fibres so ideal for a variety of critical applications
- Available sterile and with a low endotoxin claim

	Part No.	Size	Quantity
PROSAT Meltblown Polypropylene Wipes Presaturated with 70% IPA and 30% Deionised Water	PS-850-BPR	200 x 200mm	50 per pouch / 50 pouches per case
	PS-911-BPR	230 x 280mm	30 per pouch / 50 pouches per case
	PSPP0043-BPR	230 x 280mm	50 per pouch / 40 pouches per case
PROSAT Meltblown Polypropylene Wipes Presaturated with 70% DE and 30% Deionised Water	PS-911ETOH	230 x 280mm	30 per pouch / 50 pouches per case
PROSAT Sterile Meltblown Polypropylene Wipes Presaturated with 70% IPA and 30% Deionised Water	PS-840IR-BPR	200 x 200mm	40 per pouch / 24 pouches per case
	PS-911EB-BPR	230 x 280mm	30 per pouch / 48 pouches per case
	PSPP0039-BPR	230 x 280mm	50 per pouch / 24 pouches per case
PROSAT Sterile Meltblown Polypropylene Wipes Presaturated with 70% Denatured Ethanol and 30% Deionised Water	PS-911EB/ETOH	230 x 280mm	30 per pouch / 48 pouches per case
PROSAT Sterile Meltblown Polypropylene LE Wipes Presaturated with 70% IPA and 30% Deionised Water	PS-911LE-BPR	230 x 280mm	30 per pouch / 36 pouches per case



Sterile



Sterile



Low Endotoxin



- Recommended for ISO Class 5-8 environments
- Excellent choice when fast drying times are required
- Meltblown polypropylene fabric is exceptionally clean and free from additives

PROSAT Meltblown Polypropylene Wipes

Presaturated with 91% IPA and 9% Deionised water

Product information

PROSAT PS-919 Meltblown Polypropylene Wipes are presaturated with a blend of 91% IPA and 9% DI Water and are an excellent choice for general surface cleaning where fast drying times are desired. Manufactured from meltblown polypropylene these PROSAT wipes offer exceptional cleanliness. They are low in nonvolatile residues as well as particles and fibres.

Available in convenient, easy-to-use resealable pouches which are individually lot numbered for traceability. These specially designed pouches preserve cleanliness and solvent saturation levels. The use of presaturated wipes reduces VOC emissions and solvent use up to 35% compared to spraying.

PROSAT wipes are an effective, efficient and convenient method of cleaning process tools and other equipment.

	Part No.	Size	Quantity
PROSAT PS-919 Meltblown Polypropylene Wipes Presaturated with 91 % IPA and 9% Deionised Water	PS-919 (folded)	230 x 280mm	30 per pouch / 50 pouches per case



- Recommended for ISO Class 5-8 environments
- Split microfibre fabric increases cleaning effectiveness and contaminant pick up
- Metered release of alcohol provides greater surface coverage than most comparable weight presaturated wipes

PROSAT Pi Wipes

Polyester/nylon split microfibre wipes presaturated with 70% IPA

Product information

PROSAT Pi wipes consist of 80g/m² hydroentangled microfibre wipes saturated with a solution of 70% IPA and 30% deionised water so are ideal for use in life science applications.

The wipes are made from a polyester and nylon split microfibre, enhancing their cleaning effectiveness and ability to pick up contamination. The microfibre fabric is highly sorbent and also offers a metered release of the alcohol to the surface. This metered release ensures the surface coverage per wipe is greater than other comparable weight, presaturated wipes. Therefore, these wipes can help a manufacturer control contamination whilst consuming less resources.

Presaturated wipes ensure consistent saturation of each wipe independent of operator. Presaturated wipes can increase solvent control and accountability as well as reduce VOC emissions. The wipes are provided in convenient, easy to use peel and reseal pouches.

PROSAT Sterile Pi wipes are gamma irradiated and validated per AAMI Guidelines to a 10⁻⁶ SAL, so can be used in all grades of life science cleanroom. The sterile product has a small number of wipes per pouch to ensure all wipes can be used up in one session.

	Part No.	Size	Quantity
PROSAT Pi Wipes Presaturated with 70% IPA and 30% Deionised Water	PS-314-BPR (folded)	230 x 230mm	20 per pouch / 40 pouches per case
PROSAT Sterile Pi Wipes Presaturated with 70% IPA and 30% Deionised Water	PS-314IR-BPR (folded)	230 x 230mm	20 per pouch / 40 pouches per case





- Recommended for ISO Class 5-8 environments
- Cost-effective cleanroom wipe with low levels of particles and fibres
- Highly sorbent with good wet strength
- Available validated sterile

PROSAT Sigma Wipes

Cellulose/polyester nonwoven wipes presaturated with 70% alcohol



Product information

PROSAT Sigma wipes are manufactured from 68g/m² hydroentangled cellulose/polyester and saturated with a choice of 70% IPA or denatured ethanol and deionised water.

Cellulose/polyester wipes are a cost-effective cleanroom wipe, with low levels of particles and fibres. Highly sorbent with good wet strength, the wipes can be used for many general cleaning applications. Ideal for wiping articles prior to pass through, routine cleaning and wipe down of lab tools, instruments and other equipment.

The wipes are provided in convenient and easy-to-use peel and reseal pouches. The resealable pouches preserve solvent saturation and cleanliness.

PROSAT Sterile Sigma wipes are gamma irradiated and validated per AAMI Guidelines to a 10⁻⁶ SAL, so can be used in all grades of life science cleanroom. The sterile pouches have a small number of wipes per pouch to ensure all wipes can be used up in one session.

	Part No.	Size	Quantity
PROSAT Sigma Wipes Presaturated with 70% IPA and 30% DI water	PSC20002-BPR (folded)	230 x 280mm	24 per pouch / 50 pouches per case
PROSAT Sterile Sigma Wipes Presaturated with 70% IPA	PSC20001-BPR (folded)	230 x 280mm	24 per pouch / 48 pouches per case
PROSAT Sterile Sigma Wipes Presaturated with 70% DE	PSC20003 (folded)	230 x 280mm	20 per pouch / 30 pouches per case



- Recommended for ISO Class 6-8 environments
- Cost-effective cleanroom wipe with low levels of particles and fibres
- Highly sorbent with good wet strength

SATWIPEs Sigma Wipes

Cellulose/polyester nonwoven wipes presaturated with 70% IPA

Product information

SATWIPEs Sigma consists of a perforated roll of saturated wipes which are dispensed through a centre-pull canister. SATWIPEs Sigma wipes are manufactured from 68g/m² hydroentangled cellulose/polyester and saturated with 70% IPA and deionised water.

Cellulose/polyester wipes are a cost-effective cleanroom wipe, with low levels of particles and fibres. Highly sorbent with good wet strength, the wipes can be used for many general cleaning applications.

To reduce packaging waste each case is supplied with one canister and 12 refill rolls. To preserve product integrity the rolls are packaged in specially designed pouches, which are opened and loaded inside the SATWIPEs canister. Refill pouches can be purchased separately, SAT-C1-7030/18-BPR. Additional canisters can also be purchased SAT-CAN120.

	Part No.	Size	Quantity
SATWIPEs Sigma Wipes Presaturated with 70% IPA and 30% Deionised Water	SAT-C1-7030-BPR	150 x 230mm	100 per roll / 12 rolls and 1 canister per case
	SAT-C1-7030/18-BPR	150 x 230mm	100 per roll / 18 rolls per case
SATWIPEs Canister	SAT-CAN120		10 canisters per case



- Recommended for ISO Class 6-8 environments
- Cost-effective cleanroom wipe with low levels of particles and fibres
- Highly sorbent with good wet strength

SATWIPEs Sigma Wipes

Cellulose/polyester wipes presaturated with 99% IPA

Product information

SATWIPEs Sigma consists of a perforated roll of saturated wipes which are dispensed through a centre-pull canister. Presaturated with 99% IPA the wipes are ideal for cleaning and residue removal in critical manufacturing. The wipes are manufactured from 68g/m² hydroentangled cellulose/polyester. Cellulose/polyester wipes are a cost-effective cleanroom wipe, with low levels of particles and fibres.

The use of a presaturated wipe provides a safe cleaning option when using a high concentration of solvent. Solvent use is reduced by up to 35%. To reduce packaging waste, each case is supplied with one canister and 12 refill rolls. To preserve product integrity the rolls are packaged in specially designed pouches, which are opened and loaded inside the SATWIPEs canister. Additional canisters can also be purchased SAT-CAN120.

	Part No.	Size	Quantity
SATWIPEs Sigma Wipes Presaturated with 99% IPA	SAT-C1-100	150 x 230mm	100 per roll / 12 rolls and 1 canister per case
SATWIPEs Canister	SAT-CAN120		10 canisters per case



- Recommended for ISO Class 5-8 environments
- Lightweight nonwoven material which is low in particles and fibres making an excellent general purpose wipes
- Highly sorbent with good wet strength

PROSAT Theta Wipes

Cellulose/polyester nonwoven wipes presaturated with 70% IPA



Product information

PROSAT Theta wipes consist of 54g/m² cellulose/polyester hydroentangled wipes saturated with a solution of 70% IPA and 30% deionised water so are ideal for use in life science applications.

Cellulose/polyester wipes are a cost-effective cleanroom wipe, with low levels of particles and fibres. Highly sorbent with good wet strength, the wipes can be used for many general cleaning applications. Ideal for wiping articles prior to pass through, routine cleaning and wipe down of lab tools, instruments and other equipment.

PROSAT Sterile Theta wipes are gamma irradiated and validated per AAMI Guidelines to a 10⁻⁶ SAL, so can be used in all grades of life science cleanroom.

	Part No.	Size	Quantity
PROSAT Theta Wipes Presaturated with 70% IPA and 30% Deionised Water	PSC20006-BPR (folded)	230 x 280mm	50 per pouch / 28 pouches per case
PROSAT Sterile Theta Wipes Presaturated with 70% IPA and 30% Deionised Water	PSC20005-BPR (folded)	230 x 280mm	50 per pouch / 28 pouches per case



- Recommended for ISO Class 5-8 environments
- Lightweight nonwoven material makes an excellent general purpose wipes
- Highly sorbent with good wet strength

SATWIPES Theta Wipes

Cellulose/polyester wipes presaturated with 70% Denatured Ethanol

Product information

Contec's Sterile SATWIPES Theta with 70% denatured ethanol consist of a perforated roll of presaturated wipes which are dispensed through a convenient centre pull canister. The 54g/m² cellulose/polyester hydroentangled wipes are highly sorbent and durable. The presaturated wipes eliminate the need for trigger spray bottles, increasing convenience and reducing VOC's in the air.

SATWIPES Sterile Theta wipes are ideal when larger numbers of wipes are needed such as during transfer disinfection. The wipes are presaturated with 70% denatured ethanol blended with deionised water, double bagged and gamma irradiated at no less than 25 kGy.

	Part No.	Size	Quantity
PROSAT Sterile Theta Wipes Presaturated with 70% DE and 30% Deionised Water	SWC10004	150 x 230mm	100 per roll / 8 rolls per case



- **Recommend for ISO Class 7-8 environments**
- **Lightweight nonwoven material making an excellent general purpose wipe**
- **Convenient centre-pull container when large volumes of presaturated wipes are needed**

SATWIPES Wipes

Polyester/rayon nonwoven wipes
presaturated with 70% IPA

Product information

SATWIPES SWNW0013-BPR consists of a roll of 700 saturated wipes which are dispensed through a centre-pull container. The wipes are presaturated with 70% IPA and 30% deionised water.

The wipes are made of 50% polyester and 50% rayon nonwoven material creating a soft, durable, and clean wipe. The fabric is strong and sorbent.

Ideal when large volumes of presaturated wipes are needed for clean downs and lower grade areas.

	Part No.	Size	Quantity
SATWIPES Polyester/Rayon Wipes Presaturated with 70% IPA and 30% Deionised Water	SWNW0013-BPR	230 x 180mm	700 per bucket / 2 buckets per case

Contec Knitted Wipe Comparison Guide

Brand	Substrate	Dry	Presat Pouch	Presat Canister	Sterile Option
Quiltec I	2-ply 100% polyester interlock knit	Yes	-	-	Yes
Anticon Gold HeavyWeight	100% no-run interlock knit polyester	Yes	-	-	Yes
Polynit Heatseal	100% no-run interlock knit polyester	Yes	-	-	Yes
PROSAT Polynit Heatseal	100% no-run interlock knit polyester	-	Yes	-	Yes
Anticon 100 HeavyWeight	100% no-run interlock knit polyester	Yes	-	-	Yes
Polynit	100% no-run interlock knit polyester	Yes	-	-	-
Anticon Gold StandardWeight	100% interlock knit polyester	Yes	-	-	-
Polywipe-C Heatseal	100% interlock knit polyester	Yes	-	-	Yes
PROSAT Polywipe-C Heatseal	100% interlock knit polyester	-	Yes	-	Yes
Refibe StandardWeight Heatseal	100% interlock knit recycled polyester	Yes	-	-	Yes
Anticon 100 StandardWeight	100% interlock knit polyester	Yes	-	-	-
Polywipe-C	100% interlock knit polyester	Yes	-	-	-

MICROFIBRE

Anticon MicroQuilt	2-ply microfibre polyester interlock knit	Yes	-	-	Yes
Anticon Gold Sorb	100% polyester, blend of standard and microfibres	Yes	-	-	Yes
MicroSilk II	75/25% blend of microfibre polyester/nylon	Yes	-	-	-

SPECIALITY

Polynit Z	ESD polyester	Yes	-	-	-
StatZorb	ESD polyester	Yes	-	-	-

All test work is carried out on the dry substrate to the requirements of IEST-RP-CC004.2 or CC004.3.

Data shown are nominal typical values and should not be used as the product specifications.

Valid product comparisons may only be obtained through side-by-side testing in the same test facility, using the same test methods and test equipment.

Low Endotoxin	Edge Type	Weight g/m ²	Area of Use	Area of Use (GMP)	Extrinsic absorbency ml/m ²	Particles > 0.5 µm x 10 ⁶ /m ²	Fibres > 100 µm x 10 ³ /m ²
-	Sealed	240	ISO 3-8	A - D	581	5.70	0.14
-	Sealed	140	ISO 3-8	A - D	471	4.34	0.14
Yes	Sealed	140	ISO 3-8	A - D	359	2.20	0.16
Yes	Sealed	140	ISO 3-8	A - D	N/A	2.60	0.14
-	Knife-cut	140	ISO 5-8	A - D	455	5.69	3.15
-	Knife-cut	140	ISO 5-8	C - D	357	6.90	0.53
-	Sealed	120	ISO 3-8	A - D	350	5.20	0.14
-	Sealed	120	ISO 3-8	C - D	289	3.08	0.14
-	Sealed	120	ISO 3-8	A - D	N/A	2.22	0.14
-	Sealed	124	ISO 3-8	A - D	275	2.72	0.15
-	Knife-cut	120	ISO 5-8	C - D	339	3.97	1.56
-	Knife-cut	120	ISO 5-8	C - D	265	4.01	1.26
-	Sealed	230	ISO 3-8	A - D	850	5.7	0.45
-	Sealed	148	ISO 3-8	A - D	500	5.0	0.16
-	Sealed	235	ISO 5-8	C - D	367	36.3	0.48
-	Sealed	140	ISO 3-8	N/A	303	2.2	1.45
-	Sealed	135	ISO 3-8	N/A	215	33.6	5.70

Contec Nonwoven Wipe Comparison Guide

Brand	Substrate	Dry	Presat Pouch	Presat Canister
Amplitude Kappa	Lyocell/polyester	Yes	-	-
Amplitude Delta	100% nonwoven polyester	Yes	-	-
PROSAT Delta	100% nonwoven polyester	-	Yes	-
SATWIPES Delta	100% nonwoven polyester	-	-	Yes
PROSAT MBPP	Meltblown polypropylene	-	Yes	-
Amplitude Sigma/SterileSorb	Cellulose/polyester blend	Yes	-	-
PROSAT Sigma	Cellulose/polyester blend	-	Yes	-
SATWIPES Sigma	Cellulose/polyester blend	-	-	Yes
Amplitude Epsilon	Cellulose/polyester blend (blue)	Yes	-	-
Amplitude EcoCloth	Cellulose/polyester blend (extra loft)	Yes	-	-
Amplitude Prozorb	Cellulose/polyester blend (textured)	Yes	-	-
Amplitude Theta	Cellulose/polyester blend (lightweight)	Yes	-	-
PROSAT Theta	Cellulose/polyester blend (lightweight)	-	Yes	-
SATWIPES Theta	Cellulose/polyester blend (lightweight)	-	-	Yes
Amplitude Zeta	5-ply polypropylene and cellulose laminate	Yes	-	-
TuffStuff Heavy Duty	Cellulose/polyester blend	Yes	-	-
TuffStuff Medium Duty	Cellulose/polyester blend	Yes	-	-
Twill Jean	Woven cotton	Yes	-	-
Amplitude Optic	Abaca cellulose	Yes	-	-
SATWIPES Polyester/Rayon	50% Polyester/50% rayon blend	-	-	Yes

MICROFIBRE

MicroGenesis	100% microfibre polyester into polypropylene substrate	Yes	-	-
PROSAT Pi	70%/30% polyester/nylon split microfibre	-	Yes	-

CNC - Controlled not classified environments.

All test work is carried out on the dry substrate to the requirements of IEST-RP-CC004.2 or CC004.3.

Data shown are nominal typical values and should not be used as the product specifications.

Valid product comparisons may only be obtained through side-by-side testing in the same test facility, using the same test methods and test equipment.

Sterile Option	Low Endotoxin	Weight g/m ²	Area of Use	Area of Use (GMP)	Extrinsic absorbency ml/m ²	Particles > 0.5 µm x 10 ⁶ /m ²	Fibres > 100 µm x 10 ³ /m ²
Yes	Yes	61	ISO 5-8	A - D	395	16.3	22.0
-	-	71	ISO 5-8	C - D	305	7.9	2.00
Yes	-	67	ISO 5-8	A - D	N/A	39.3	10.4
-	-	69	ISO 6-8	C - D	N/A	16.5	1.0
Yes	Yes	36	ISO 5-8	A - D	N/A	5.8	6.3
Yes	-	68	ISO 5-8	A - D	314	32.7	22.0
Yes	-	70	ISO 5-8	A - D	N/A	21.5	37.7
-	-	68	ISO 6-8	C - D	N/A	17.1	14.8
-	-	71	ISO 5-8	C - D	291	25.2	25.0
-	-	56	ISO 5-8	C - D	356	30.0	29.0
-	-	55	ISO 5-8	C - D	367	29.7	11.0
-	-	51	ISO 5-8	C - D	249	32.0	22.0
Yes	-	53	ISO 5-8	A - D	N/A	18.6	21.7
Yes	-	53	ISO 5-8	A - D	N/A	18.6	21.7
-	-	85	ISO 6-8	C - D	435	115	12.0
-	-	65	ISO 6-8	C - D	329	N/A	N/A
-	-	56	ISO 6-8	CNC	288	N/A	N/A
-	-	190	ISO 7-8	CNC	300	80.0	98
-	-	17	ISO 6-8	C - D	79	42.4	0.52
-	-	36	ISO 7-8	C - D	N/A	58.2	16.8
-	-	120	ISO 6-8	C - D	658	6.8	2.39
Yes	-	80	ISO 5-8	A - D	N/A	11.2	11.9



Contec® cleaning and disinfecting products are available throughout the world. Sales and technical support representatives are conveniently located across Europe, Asia, and North and South America. Visit our website to find a representative in your area and to learn more about our products for critical environments.

Presaturated Wipes
Mopping Systems
Disinfectants

Spill Control Products
Knitted Wipes
Sterile Products

Sponges
Nonwoven Wipes
Swabs

Contec Europe

Ave Paul Duplaix
56000 VANNES
FRANCE

Tel: +33 (0) 2 97 43 76 98

Contec Cleanroom Technology (Suzhou) Co. Ltd.

17 Longyun Road
Suzhou Industrial Park
Suzhou 215026
China

Tel: +86-512-6274 4050

Contec, Inc.

P.O. Box 530
Spartanburg, SC 29304 USA

Tel: +1-864-503-8333

Tel: +1-800-289-5762

Contec® and the Contec logo and logotype are registered trademarks of Contec, Inc. Anticon, Anticon 100, PROSAT, Quiltex I, SATWIPEs, and StatZorb are registered trademarks of Contec, Inc. Amplitude Delta, Amplitude Epsilon, Amplitude Sigma, Amplitude Theta, Amplitude Zeta, Amplitude Prozorb, SterileSorb, Amplitude Kappa, Amplitude Ecocloth, Polywipe-C, Polywipe-C Heatseal, Polynit, Polynit Heatseal, PROSAT Sterile, MicroQuilt, MicroGenesis, ReFIBE, and TuffStuff are trademarks of Contec Inc. Contec's product range is continually being updated and improved, we therefore reserve the right to change, modify or withdraw any product without notice. Due to the wide range of applications, Contec, Inc. makes no guarantees, specific or implied for the suitability of use for specific